



1300 Sumner Avenue  
Cleveland, Ohio 44115-2851  
Phone: 216-241-7333 • Fax: 216-241-0105  
E-mail: [dasma@dasma.com](mailto:dasma@dasma.com)

## Common Jamb Construction for Rolling Steel Counter Fire Doors: Masonry Construction - Bolted Guides

### Introduction:

Rolling steel counter fire doors are tested for compliance with UL 10B and NFPA 252. When tested, these doors are mounted on frames with jambs intended to replicate field construction. The test frame is held on the face of the test furnace for a specified period of time. The guides must remain fastened to the jambs and no “through gaps” may occur in the door assembly during the test. This DASMA Technical Data Sheet includes a representation of jamb construction and guide attachment details. Guide configurations and approved jamb construction will vary with individual fire door manufacturer's listings. Consult with individual manufacturers for specific guide details and their approved jamb constructions.

### Objectives:

The objectives of preparing the set of standard details enclosed areas follows:

1. To show how counter fire door guide assemblies are located on the jamb for face of wall mounting and between jamb mounting.
2. To provide recommendations for rebar locations in jambs.
3. To help architects, engineers and others involved with building specifications understand the relationship between the rolling steel counter fire door guides and the jamb/wall design.
4. To have the attached details included in applicable reference documents used by architects, engineers, specifiers and code officials

See the following pages for a list of standard jamb construction details.

---

**Note: Technical Data Sheets are information tools only and should not be used as substitutes for instructions from individual manufacturers. Always consult with individual manufacturers for specific recommendations for their products and check the applicable local regulations.**

This Technical Data Sheet was prepared by the members of DASMA's Rolling Door Division Technical Committee. DASMA is a trade association comprising manufacturers of rolling doors, fire doors, grilles, counter shutters, sheet doors, and related products; upward-acting residential and commercial garage doors; operating devices for garage doors and gates, sensing devices, and electronic remote controls for garage doors and gate operators; as well as companies that manufacture or supply either raw materials or significant components used in the manufacture and installation of the Active Members' products.

## DASMA Recommended

### Standard Jamb Construction:

## Rolling Steel Counter Fire Doors on Masonry Walls

### Bolted Guides

#### General Notes:

1. Existing and new wall construction covered
2. Details are for general information only
3. Details are based on UL Classified and FM Approved Products
4. Consult a structural engineer for actual wall construction
5. Details are attachments to TDS-263

---

**Note: Technical Data Sheets are information tools only and should not be used as substitutes for instructions from individual manufacturers. Always consult with individual manufacturers for specific recommendations for their products and check the applicable local regulations.**

This Technical Data Sheet was prepared by the members of DASMA's Rolling Door Division Technical Committee. DASMA is a trade association comprising manufacturers of rolling doors, fire doors, grilles, counter shutters, sheet doors, and related products; upward-acting residential and commercial garage doors; operating devices for garage doors and gates, sensing devices, and electronic remote controls for garage doors and gate operators; as well as companies that manufacture or supply either raw materials or significant components used in the manufacture and installation of the Active Members' products.

ROLLING DOOR DIVISION  
**TECHNICAL DATA SHEET**  
**#263**

**List of Standard Jamb Construction Details (Rolling Steel Counter Fire Doors: Masonry Construction - Bolted Guides)**

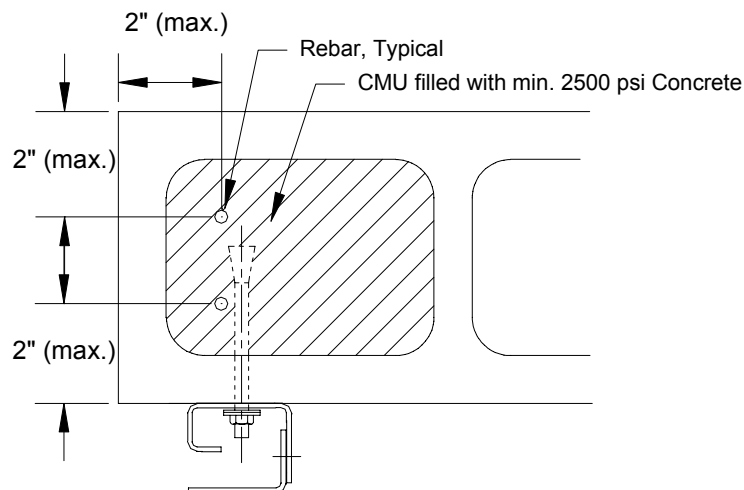
- Figure 1. [Preferred CMU Reinforcement Detail](#)
- Figure 2. [Preferred Brick/Concrete Reinforcement Detail](#)
- Figure 3. [Face-mounted counter fire door guide configuration; bolted connection; hollow block](#)
- Figure 4. [Face-mounted counter fire door guide configuration; bolted connection; filled block](#)
- Figure 5. [Face-mounted counter fire door guide configuration; bolted connection; brick or poured concrete](#)
- Figure 6. [Face-mounted counter fire door guide configuration; fastened connection; steel bent plate at jamb; brick or poured concrete](#)
- Figure 7. [Face-mounted counter fire door guide configuration; fastened connection; steel angle at jamb; brick or poured concrete](#)
- Figure 8. [Face-mounted counter fire door guide configuration; fastened connection; structural steel channel at jamb; brick or poured concrete](#)
- Figure 9. [Face-mounted counter fire door guide configuration; fastened connection; steel angle at jamb; filled block](#)
- Figure 10. [Jamb-mounted counter fire door guide configuration; bolted connection; filled block](#)
- Figure 11. [Jamb-mounted counter fire door guide configuration; bolted connection; brick or poured concrete](#)
- Figure 12. [Jamb-mounted counter fire door guide configuration; fastened connection; structural steel channel at jamb; brick or poured concrete](#)
- Figure 13. [Jamb-mounted counter fire door guide configuration; fastened connection; steel bent plate at jamb; brick or poured concrete](#)

---

**Note: Technical Data Sheets are information tools only and should not be used as substitutes for instructions from individual manufacturers. Always consult with individual manufacturers for specific recommendations for their products and check the applicable local regulations.**

This Technical Data Sheet was prepared by the members of DASMA's Rolling Door Division Technical Committee. DASMA is a trade association comprising manufacturers of rolling doors, fire doors, grilles, counter shutters, sheet doors, and related products; upward-acting residential and commercial garage doors; operating devices for garage doors and gates, sensing devices, and electronic remote controls for garage doors and gate operators; as well as companies that manufacture or supply either raw materials or significant components used in the manufacture and installation of the Active Members' products.

## DASMA Recommended Common Jamb Construction for Rolling Steel Counter Fire Doors For Maximum 4 Hour Rating

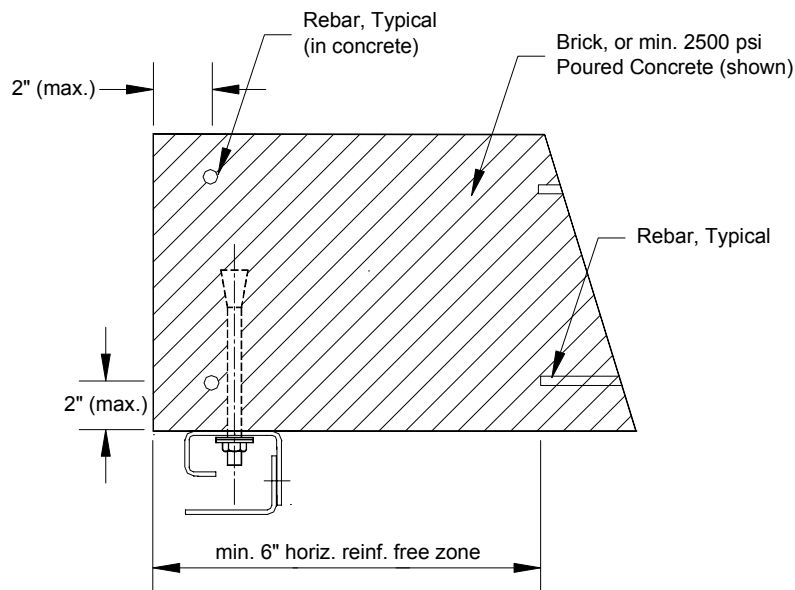


**Figure 1**  
Preferred CMU Reinforcement Detail

**Note: Technical Data Sheets are information tools only and should not be used as substitutes for instructions from individual manufacturers. Always consult with individual manufacturers for specific recommendations for their products and check the applicable local regulations.**

This Technical Data Sheet was prepared by the members of DASMA's Rolling Door Division Technical Committee. DASMA is a trade association comprising manufacturers of rolling doors, fire doors, grilles, counter shutters, sheet doors, and related products; upward-acting residential and commercial garage doors; operating devices for garage doors and gates, sensing devices, and electronic remote controls for garage doors and gate operators; as well as companies that manufacture or supply either raw materials or significant components used in the manufacture and installation of the Active Members' products.

## DASMA Recommended Common Jamb Construction for Rolling Steel Counter Fire Doors For Maximum 4 Hour Rating

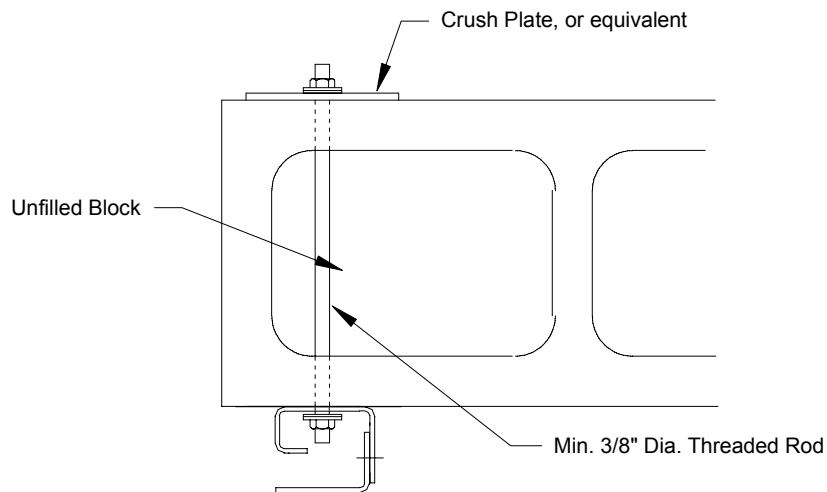


**Figure 2**  
Preferred Brick/Concrete Reinforcement Detail

**Note: Technical Data Sheets are information tools only and should not be used as substitutes for instructions from individual manufacturers. Always consult with individual manufacturers for specific recommendations for their products and check the applicable local regulations.**

This Technical Data Sheet was prepared by the members of DASMA's Rolling Door Division Technical Committee. DASMA is a trade association comprising manufacturers of rolling doors, fire doors, grilles, counter shutters, sheet doors, and related products; upward-acting residential and commercial garage doors; operating devices for garage doors and gates, sensing devices, and electronic remote controls for garage doors and gate operators; as well as companies that manufacture or supply either raw materials or significant components used in the manufacture and installation of the Active Members' products.

## DASMA Recommended Common Jamb Construction for Rolling Steel Counter Fire Doors For Maximum 4 Hour Rating



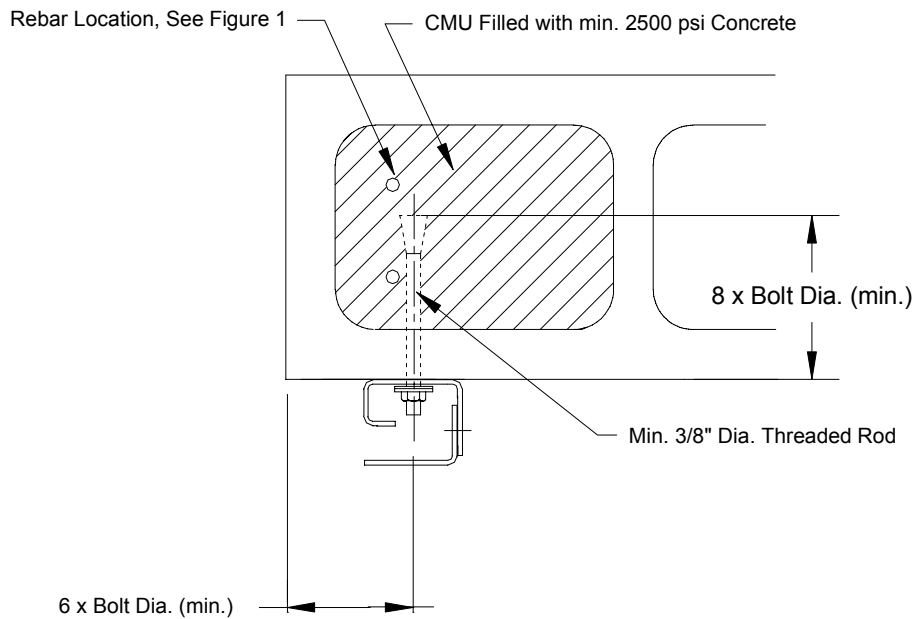
**Figure 3**

Face-mounted counter fire door guide configuration;  
bolted connection; hollow block

**Note: Technical Data Sheets are information tools only and should not be used as substitutes for instructions from individual manufacturers. Always consult with individual manufacturers for specific recommendations for their products and check the applicable local regulations.**

This Technical Data Sheet was prepared by the members of DASMA's Rolling Door Division Technical Committee. DASMA is a trade association comprising manufacturers of rolling doors, fire doors, grilles, counter shutters, sheet doors, and related products; upward-acting residential and commercial garage doors; operating devices for garage doors and gates, sensing devices, and electronic remote controls for garage doors and gate operators; as well as companies that manufacture or supply either raw materials or significant components used in the manufacture and installation of the Active Members' products.

## DASMA Recommended Common Jamb Construction for Rolling Steel Counter Fire Doors For Maximum 4 Hour Rating



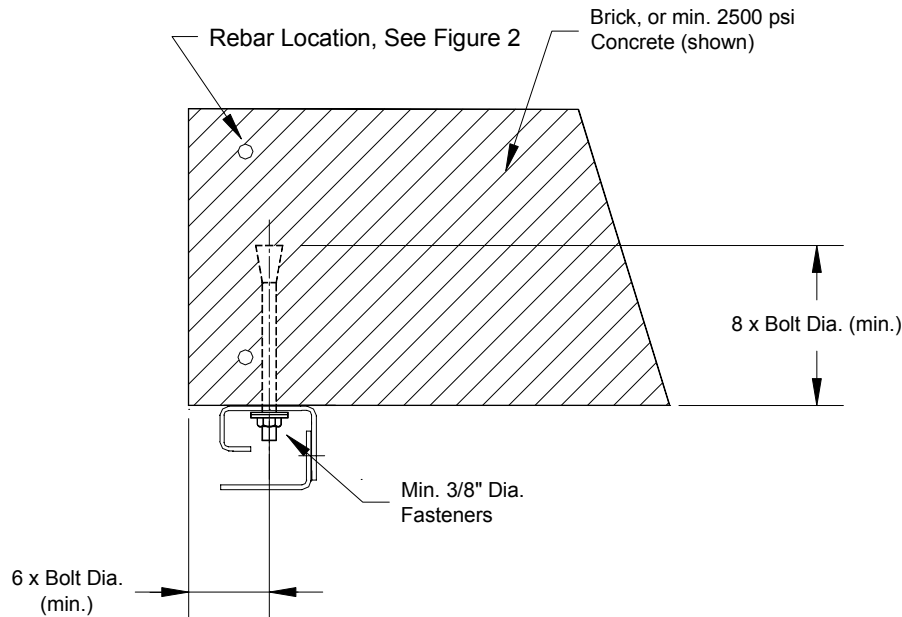
**Figure 4**

Face-mounted counter fire door guide configuration;  
bolted connection; filled block

**Note: Technical Data Sheets are information tools only and should not be used as substitutes for instructions from individual manufacturers. Always consult with individual manufacturers for specific recommendations for their products and check the applicable local regulations.**

This Technical Data Sheet was prepared by the members of DASMA's Rolling Door Division Technical Committee. DASMA is a trade association comprising manufacturers of rolling doors, fire doors, grilles, counter shutters, sheet doors, and related products; upward-acting residential and commercial garage doors; operating devices for garage doors and gates, sensing devices, and electronic remote controls for garage doors and gate operators; as well as companies that manufacture or supply either raw materials or significant components used in the manufacture and installation of the Active Members' products.

## DASMA Recommended Common Jamb Construction for Rolling Steel Counter Fire Doors For Maximum 4 Hour Rating



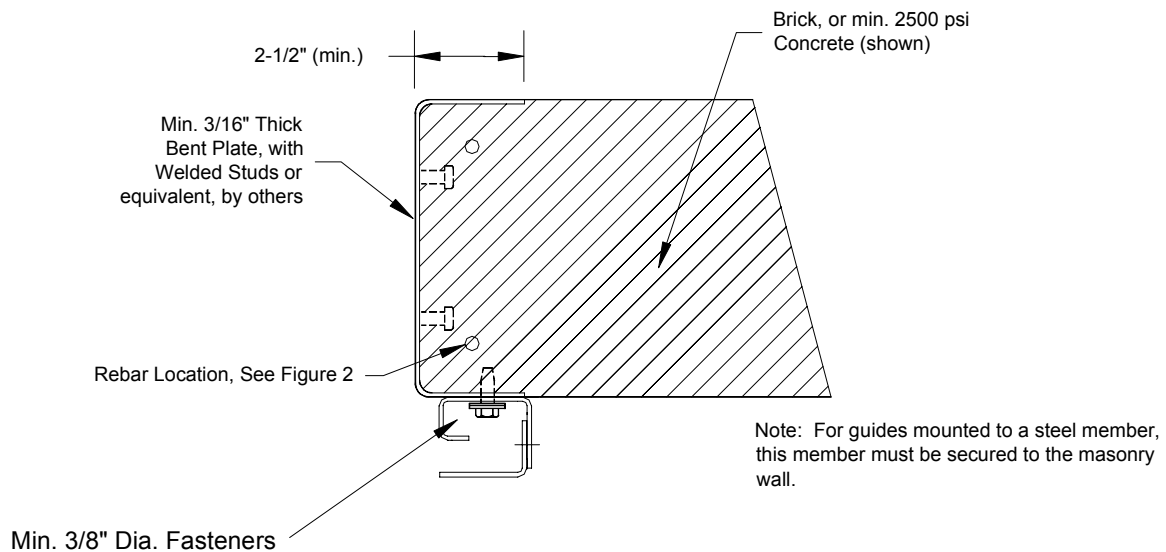
**Figure 5**

Face-mounted counter fire door guide configuration;  
bolted connection; brick or concrete

**Note: Technical Data Sheets are information tools only and should not be used as substitutes for instructions from individual manufacturers. Always consult with individual manufacturers for specific recommendations for their products and check the applicable local regulations.**

This Technical Data Sheet was prepared by the members of DASMA's Rolling Door Division Technical Committee. DASMA is a trade association comprising manufacturers of rolling doors, fire doors, grilles, counter shutters, sheet doors, and related products; upward-acting residential and commercial garage doors; operating devices for garage doors and gates, sensing devices, and electronic remote controls for garage doors and gate operators; as well as companies that manufacture or supply either raw materials or significant components used in the manufacture and installation of the Active Members' products.

## DASMA Recommended Common Jamb Construction for Rolling Steel Counter Fire Doors For Maximum 4 Hour Rating



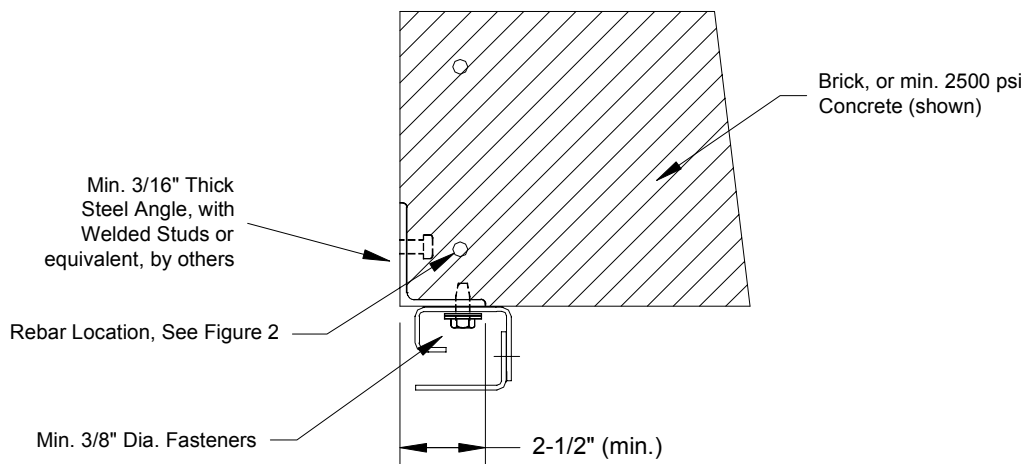
**Figure 6**

Face-mounted counter fire door guide configuration;  
steel bent plate at jamb; brick or concrete

**Note: Technical Data Sheets are information tools only and should not be used as substitutes for instructions from individual manufacturers. Always consult with individual manufacturers for specific recommendations for their products and check the applicable local regulations.**

This Technical Data Sheet was prepared by the members of DASMA's Rolling Door Division Technical Committee. DASMA is a trade association comprising manufacturers of rolling doors, fire doors, grilles, counter shutters, sheet doors, and related products; upward-acting residential and commercial garage doors; operating devices for garage doors and gates, sensing devices, and electronic remote controls for garage doors and gate operators; as well as companies that manufacture or supply either raw materials or significant components used in the manufacture and installation of the Active Members' products.

## DASMA Recommended Common Jamb Construction for Rolling Steel Counter Fire Doors For Maximum 4 Hour Rating



**Notes:**

1. For guides mounted to a steel angle, this angle must be embedded, or secured to the masonry wall. Angle must be designed to have an expansion gap equal to 1/8" for each foot of opening height in order to be suitable for welding guide angle to jamb.
2. For guides mounted to steel, when this steel stops at the header, metal shims must be inserted between the guide wall angle and the wall above the opening.

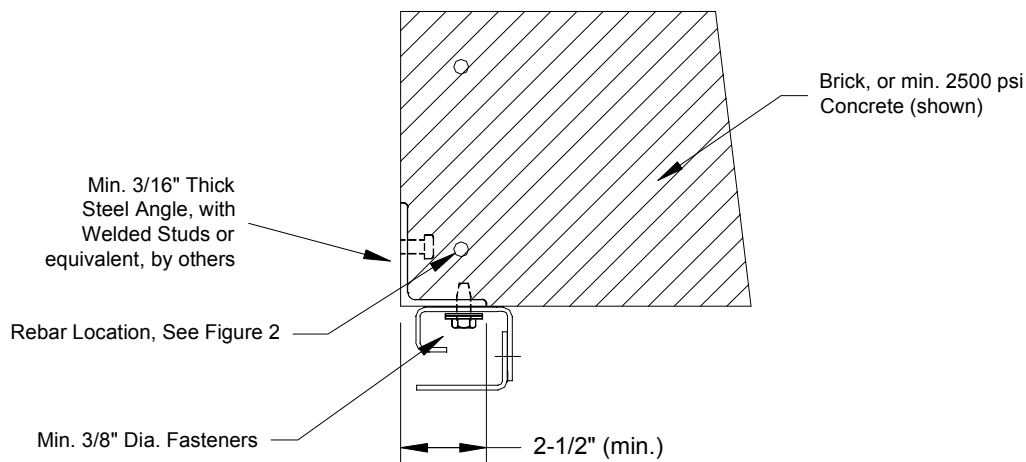
**Figure 7**

Face-mounted counter fire door guide configuration;  
fastened connection; steel angle at jamb;  
brick or concrete

**Note: Technical Data Sheets are information tools only and should not be used as substitutes for instructions from individual manufacturers. Always consult with individual manufacturers for specific recommendations for their products and check the applicable local regulations.**

This Technical Data Sheet was prepared by the members of DASMA's Rolling Door Division Technical Committee. DASMA is a trade association comprising manufacturers of rolling doors, fire doors, grilles, counter shutters, sheet doors, and related products; upward-acting residential and commercial garage doors; operating devices for garage doors and gates, sensing devices, and electronic remote controls for garage doors and gate operators; as well as companies that manufacture or supply either raw materials or significant components used in the manufacture and installation of the Active Members' products.

## DASMA Recommended Common Jamb Construction for Rolling Steel Counter Fire Doors For Maximum 4 Hour Rating



**Notes:**

1. For guides mounted to a steel angle, this angle must be embedded, or secured to the masonry wall. Angle must be designed to have an expansion gap equal to 1/8" for each foot of opening height in order to be suitable for welding guide angle to jamb.
2. For guides mounted to steel, when this steel stops at the header, metal shims must be inserted between the guide wall angle and the wall above the opening.

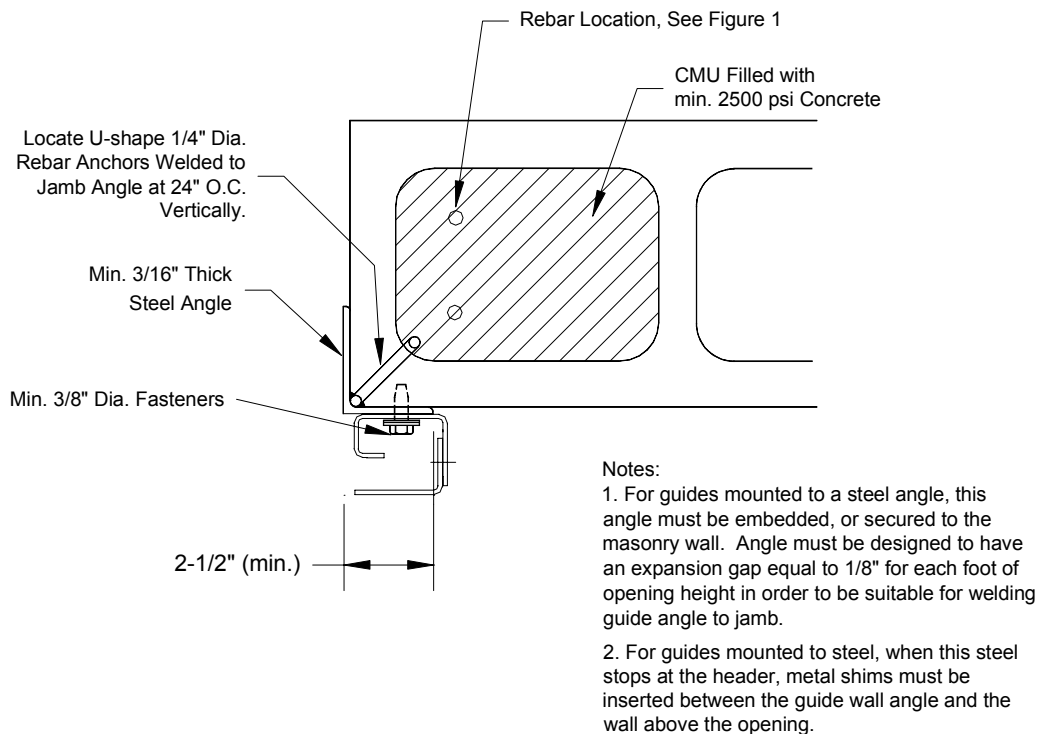
**Figure 7**

Face-mounted counter fire door guide configuration;  
fastened connection; steel angle at jamb;  
brick or concrete

**Note: Technical Data Sheets are information tools only and should not be used as substitutes for instructions from individual manufacturers. Always consult with individual manufacturers for specific recommendations for their products and check the applicable local regulations.**

This Technical Data Sheet was prepared by the members of DASMA's Rolling Door Division Technical Committee. DASMA is a trade association comprising manufacturers of rolling doors, fire doors, grilles, counter shutters, sheet doors, and related products; upward-acting residential and commercial garage doors; operating devices for garage doors and gates, sensing devices, and electronic remote controls for garage doors and gate operators; as well as companies that manufacture or supply either raw materials or significant components used in the manufacture and installation of the Active Members' products.

## DASMA Recommended Common Jamb Construction for Rolling Steel Counter Fire Doors For Maximum 4 Hour Rating



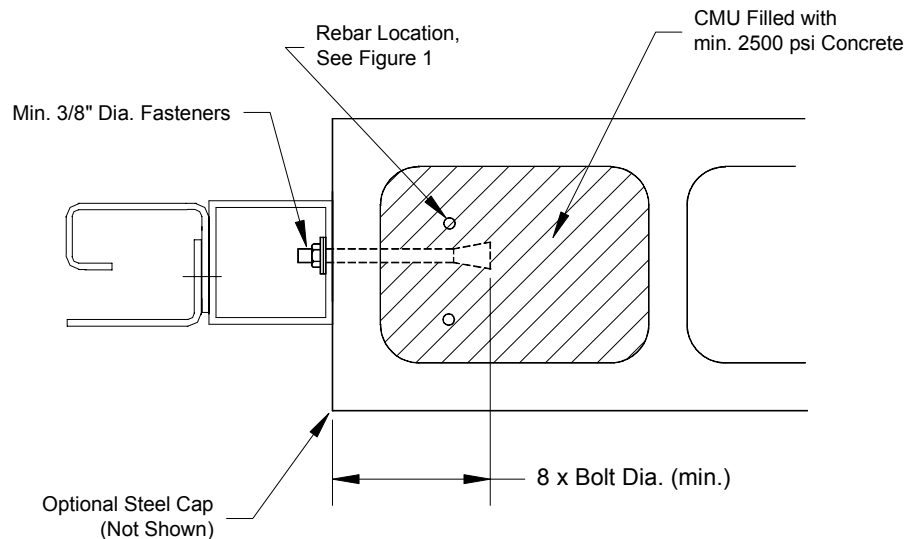
**Figure 9**

Face-mounted counter fire door guide configuration;  
fastened connection; steel angle at jamb;  
filled block

**Note: Technical Data Sheets are information tools only and should not be used as substitutes for instructions from individual manufacturers. Always consult with individual manufacturers for specific recommendations for their products and check the applicable local regulations.**

This Technical Data Sheet was prepared by the members of DASMA's Rolling Door Division Technical Committee. DASMA is a trade association comprising manufacturers of rolling doors, fire doors, grilles, counter shutters, sheet doors, and related products; upward-acting residential and commercial garage doors; operating devices for garage doors and gates, sensing devices, and electronic remote controls for garage doors and gate operators; as well as companies that manufacture or supply either raw materials or significant components used in the manufacture and installation of the Active Members' products.

## DASMA Recommended Common Jamb Construction for Rolling Steel Counter Fire Doors For Maximum 4 Hour Rating

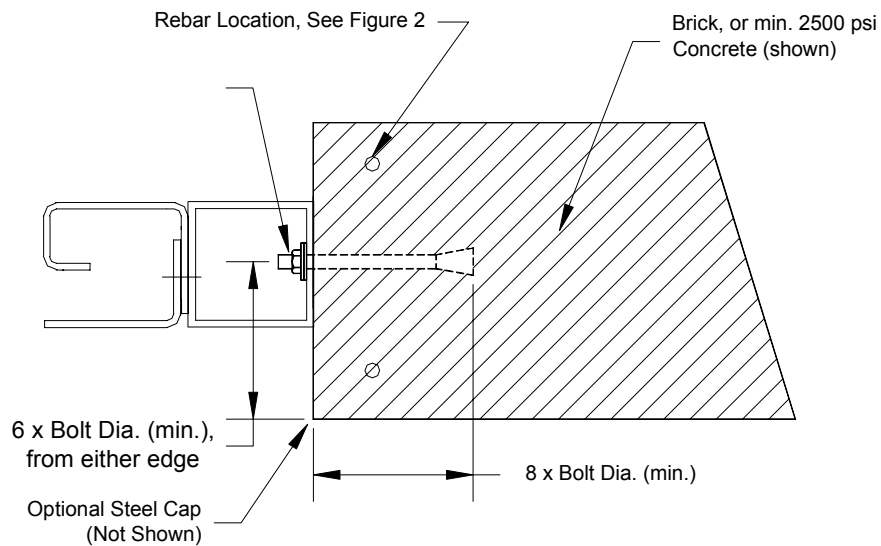


**Figure 10**  
Face-mounted counter fire door guide configuration;  
bolted connection; filled block

**Note: Technical Data Sheets are information tools only and should not be used as substitutes for instructions from individual manufacturers. Always consult with individual manufacturers for specific recommendations for their products and check the applicable local regulations.**

This Technical Data Sheet was prepared by the members of DASMA's Rolling Door Division Technical Committee. DASMA is a trade association comprising manufacturers of rolling doors, fire doors, grilles, counter shutters, sheet doors, and related products; upward-acting residential and commercial garage doors; operating devices for garage doors and gates, sensing devices, and electronic remote controls for garage doors and gate operators; as well as companies that manufacture or supply either raw materials or significant components used in the manufacture and installation of the Active Members' products.

## DASMA Recommended Common Jamb Construction for Rolling Steel Counter Fire Doors For Maximum 4 Hour Rating



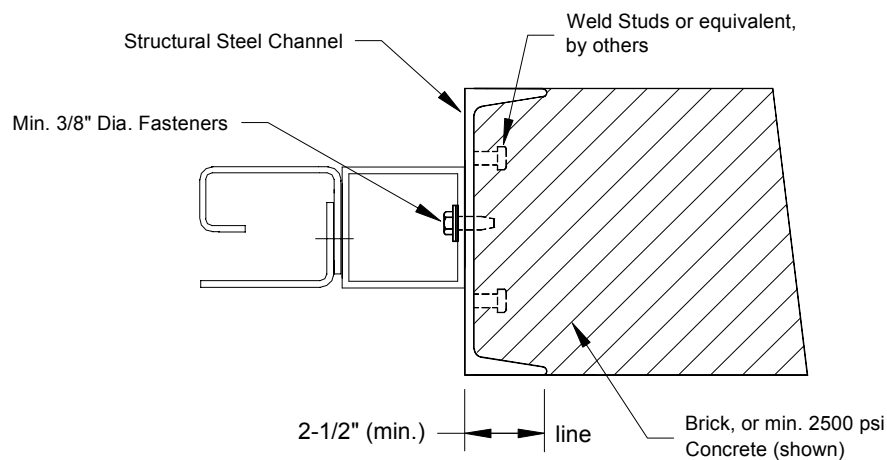
**Figure 11**

Jamb-mounted counter fire door guide configuration;  
bolted connection; brick or concrete

**Note: Technical Data Sheets are information tools only and should not be used as substitutes for instructions from individual manufacturers. Always consult with individual manufacturers for specific recommendations for their products and check the applicable local regulations.**

This Technical Data Sheet was prepared by the members of DASMA's Rolling Door Division Technical Committee. DASMA is a trade association comprising manufacturers of rolling doors, fire doors, grilles, counter shutters, sheet doors, and related products; upward-acting residential and commercial garage doors; operating devices for garage doors and gates, sensing devices, and electronic remote controls for garage doors and gate operators; as well as companies that manufacture or supply either raw materials or significant components used in the manufacture and installation of the Active Members' products.

## DASMA Recommended Common Jamb Construction for Rolling Steel Counter Fire Doors For Maximum 4 Hour Rating



**Notes:**

1. For guides mounted to a steel channel, this channel must be embedded, or secured to the masonry wall. Channel must be designed to have an expansion gap equal to 1/8" for each foot of opening height in order to be suitable for welding guide angle to steel jamb.
2. For guides mounted to steel, when this steel stops at the header, metal shims must be inserted between the guide wall angle and the wall above the opening.

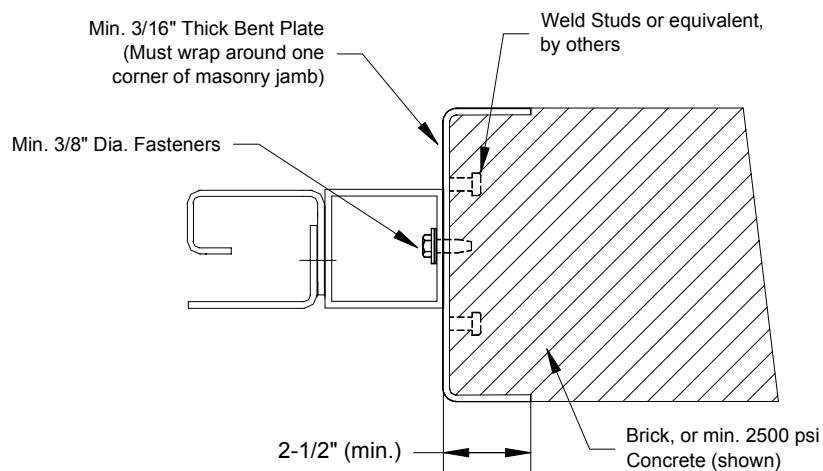
**Figure 12**

Jamb-mounted counter fire door guide configuration;  
fastened connection; structural steel channel at jamb;  
brick or concrete

**Note: Technical Data Sheets are information tools only and should not be used as substitutes for instructions from individual manufacturers. Always consult with individual manufacturers for specific recommendations for their products and check the applicable local regulations.**

This Technical Data Sheet was prepared by the members of DASMA's Rolling Door Division Technical Committee. DASMA is a trade association comprising manufacturers of rolling doors, fire doors, grilles, counter shutters, sheet doors, and related products; upward-acting residential and commercial garage doors; operating devices for garage doors and gates, sensing devices, and electronic remote controls for garage doors and gate operators; as well as companies that manufacture or supply either raw materials or significant components used in the manufacture and installation of the Active Members' products.

## DASMA Recommended Common Jamb Construction for Rolling Steel Counter Fire Doors For Maximum 4 Hour Rating



**Notes:**

1. For guides mounted to a steel plate, this plate must be embedded, or secured to the masonry wall. Plate must be designed to have an expansion gap equal to 1/8" for each foot of opening height in order to be suitable for welding guide angle to steel jamb.
2. For guides mounted to steel, when this steel stops at the header, metal shims must be inserted between the guide wall angle and the wall above the opening.

**Figure 13**

Jamb-mounted counter fire door guide configuration;  
fastened connection; steel bent plate at jamb;  
brick or concrete

**Note: Technical Data Sheets are information tools only and should not be used as substitutes for instructions from individual manufacturers. Always consult with individual manufacturers for specific recommendations for their products and check the applicable local regulations.**

This Technical Data Sheet was prepared by the members of DASMA's Rolling Door Division Technical Committee. DASMA is a trade association comprising manufacturers of rolling doors, fire doors, grilles, counter shutters, sheet doors, and related products; upward-acting residential and commercial garage doors; operating devices for garage doors and gates, sensing devices, and electronic remote controls for garage doors and gate operators; as well as companies that manufacture or supply either raw materials or significant components used in the manufacture and installation of the Active Members' products.