

## C.H.I. Adds High-Definition Fiberglass Doors

In March, C.H.I. Overhead Doors introduced two new models to its premier line of residential garage doors, the 2700 Series. The new models 2751 and 2752 bring a more traditional look to the series, while maintaining the features that set the 2700 Series apart.

The new models feature a high-definition molded fiberglass exterior, a urethane-injected core, and a 25-gauge steel interior for a calculated R-value of 15.07. Exterior skins are factory-finished in six colors: white, almond, evergreen, mahogany, walnut, and oak. [www.chiohd.com](http://www.chiohd.com) ■



## Artisan Introduces Cellular Vinyl Carriage Door

At Expo 2009 in April, Artisan Custom Doorworks exhibited the Overture Series, a new carriage door line that features low-maintenance cellular vinyl and the aesthetics of natural wood.

“The unique blend of embossing, custom milling, and finishing give Overture the allure of a wood carriage door,” says John Violante, general manager. The wood-tone finish is specifically formulated for vinyl and offers greater heat and fade resistance than ordinary paint, he adds.

Overture is wind-loaded for coastal applications and is available in swing, trifold, and bifold styles. Door models come standard with 28-inch top sections to mimic authentic carriage door designs. Offered in six wood-tone colors, Overture is available in custom sizing for single and double car configurations.

[www.artisandoorworks.com](http://www.artisandoorworks.com) ■



## Hörmann Patents Safety Catch

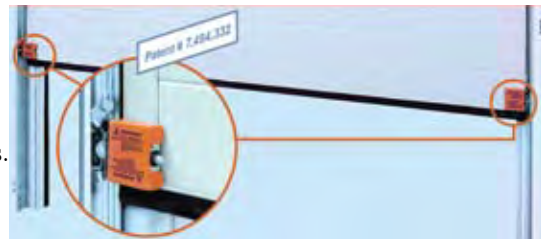
In March, Hörmann announced that it has received a U.S. patent on its safety catch device for garage doors.

This device is spring-actuated and entirely mechanical,

so it does not depend on electricity or batteries. If the door starts to drop, it immediately catches in the track and is prevented from dropping.

“We take safety very seriously, and this newly patented safety catch is just one more way we offer added value to our customers,” says Larry Campbell, vice president of sales and marketing.

Hörmann features pinch protection on its new steel doors and includes cables that carry five times the door weight. The safety catch is built into its premium doors. [www.hormann.us](http://www.hormann.us) ■



## HySecurity Introduces “Smart” Swing Gate Operator

On May 1, 2009, HySecurity introduced SwingSmart DC 20. The electromechanical, pad-mounted, battery-backup swing-gate operator meets the same standards as HySecurity’s heavy-duty hydraulic gate operators.

“Installers were asking for an easy-to-install, intelligent, durable, and reliable swing gate operator specifically for residential and commercial applications,” says Richard Woltjer, vice president of marketing. “They will be shocked when they realize how easy we’ve made installing and programming this operator.”

The operator offers time-saving features including an easy adjustment linkage arm, a forgiving swivel connection between arm and gate bracket, a Smart DC Controller, auto-synchronizing gate technology, and a 32-character LCD control board. SwingSmart will operate large, heavy gates in extreme weather conditions. [www.hysecurity.com](http://www.hysecurity.com) ■



## Wayne-Dalton Launches Cherry Sonoma

In May, Wayne-Dalton announced the launch of Cherry Sonoma, the newest color and design for Model 9800 fiberglass garage doors. The door's fiberglass skin, as produced by Therma-Tru, looks like cherry wood.

The door features the texture and depth of AccuGrain fiberglass skin applied to polyurethane-insulated pinch-resistant sections for a 7.6 R-value. The material also offers excellent corrosion and weathering resistance compared to steel or wood.

"We want to keep advancing the Model 9800 as the flagship of our residential product line", says Jeff Franklin, executive vice president. "The addition of Cherry Sonoma provides a great combination of style and looks."

The door includes decorative hardware and window options. White powder-coated hinges, top brackets, and struts provide a finished look to the interior.

[www.wayne-dalton.com](http://www.wayne-dalton.com) ■



## Raynor Announces AccuFinish Woodgrain Colors

At Expo 2009 in April, Raynor debuted AccuFinish woodgrain colors for its ShowCase residential garage doors. These steel doors use a maintenance-free laminate film that offers an excellent level of resistance to UV rays. AccuFinish is available in four woodgrain colors of cedar, oak, cherry, and walnut.

ShowCase doors feature a 2"-thick, two-sided steel design with a finished interior. Built with a thermal break and a core of thermally bonded, CFC-free, expanded polystyrene insulation, the door delivers an R-value of 10.25. [www.raynor.com](http://www.raynor.com) ■

## Amarr Introduces Dark Woodgrain Finish

In April, Amarr Garage Doors introduced a dark woodgrain finish for its steel Classica Collection, Oak Summit 3000, and Stratford 3000.

The paint system used for the woodgrain finish features UV-resistant inhibitors and comes with a limited lifetime paint warranty. The doors are offered with color-matched window frames and inserts and vinyl molding options.

"Our pre-finished woodgrain steel doors replicate the look of real mahogany wood but are actually made of steel for durability and low maintenance,"

says Vickie Lents, residential category director. She adds that the finish does not require any staining or refinishing.

[www.amarr.com](http://www.amarr.com) ■



## Genie Adds Quiet, Affordable Garage Door Opener

Overhead Door's Genie brand recently announced its new Genie BeltLift garage door opener. The BeltLift is designed to fill a need for a quiet, low-maintenance, easy-to-install belt-drive opener.

Its DC motor offers soft start and stop, and its belt-drive system provides quiet operation. "The BeltLift is easy to program with electronic limit-setting and requires little maintenance," says David Shelton, senior product manager of residential openers. [www.geniecompany.com](http://www.geniecompany.com) ■





## Raynor Launches StyleView Aluminum Doors

In April at Expo 2009, Raynor revealed its latest product innovation, StyleView residential aluminum doors. StyleView offers architectural flexibility and maximum visibility in a maintenance-free aluminum door.

StyleView is available in three models: Custom Profile, Wide Profile, and Narrow Profile. All profiles offer a variety of glass options and 187 ArmorBrite finishes.

Custom Profile doors provide many configuration options, including carriage house, French view, and mixed-panel designs with various panel spacing. StyleView Wide Profile doors offer a 2"-thick model with rail and stile construction and a standard joint seal. The Narrow Profile model is a 1-3/4"-thick door with a shiplap section joint and standard joint seal. [www.raynor.com](http://www.raynor.com) ■

## Clopay Adds Options to Gallery Collection

In May, Clopay announced several additions to its Gallery Collection vintage-style steel door line.

Clopay's Ultra-Grain woodgrain paint finish is now available on 2" polyurethane-insulated Gallery models in both dark and medium oak. Offering an R-value of 17.2, the Gallery Collection three-layer steel doors qualify for the new U.S. energy tax credit.

Starting in June, 18"-high sections will be available, allowing for door heights of 6'3", 6'6", 6'9", 8'3", 8'6" and 10'3" up to 16'-high doors in 3" height increments.

Finally, three new Leaded Series designs are being added to the Gallery Collection window portfolio to match Clopay's new fiberglass entry doors.

[www.clopaydoor.com](http://www.clopaydoor.com) ■



## Janus Launches Sure-Set Fire Doors

In April, Janus Door announced its new Sure-Set fire doors, full-duty service doors that meet current fire-protection standards.

Options include three fail-safe motor-operated systems and a standard chain hoist governor system. Sure-Set systems may be easily and repeatedly drop tested and reset from the floor with no tools or equipment.

The doors feature UL and ULC labels for standard and oversized openings and may also be S-labeled for air and smoke infiltration. The doors are tested for compliance with UL and NFPA 80 standards for reliable activation, drop speed, repeatability, and endurance. [www.janus-door.com](http://www.janus-door.com) ■

## Amarr Offers Classica Barn Doors

In May, Amarr announced a line of steel garage doors for barns and other post-frame buildings. The doors operate as sectional doors but have the style and appeal of old-style barn doors.



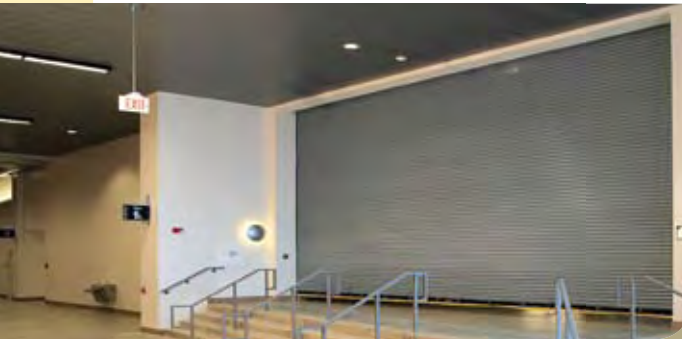
"Amarr's barn doors are actually oversized versions of our highly popular Classica Collection," says Vickie Lents, residential category director.

Amarr offers the Classica doors in a range of odd heights and widths. [www.amarr.com](http://www.amarr.com) ■

## Wayne-Dalton Announces Smoke and Draft Control Package

In May, Wayne-Dalton announced its new SmokeTite UL-labeled Smoke and Draft Control package for use with FireStar rolling steel fire doors and Atler rolling steel counter fire shutters.

SmokeTite adds certified protection to control the spread of smoke and draft. Tested per UL 1784, the UL 'S' leakage rated assembly meets the requirements of NFPA 105. [www.wayne-dalton.com](http://www.wayne-dalton.com) ■



## Garaga Adds Options for Eastman

In April, Garaga expanded the options for its Eastman carriage house garage door by offering it with decorative PVC overlays in white, desert sand, or claystone. For example, a homeowner can choose an Eastman door in moka brown and complement it with desert sand overlays.

Garaga has also added the Panoramic window style to its selection, an option that lets in the greatest amount of natural light. Garaga now offers seven different window models. [www.garaga.com](http://www.garaga.com) ■



## Arrow Tru-Line Offers New Rolled Weatherseal

At Expo 2009 in April, Arrow Tru-Line demonstrated a new door stop that offers a solid profile in a roll-up design, eliminating the need to order, stock, or transport multiple lengths to job sites. With this introduction, the Arrow Tru-Line product line has been expanded to include weatherseals.

The new weatherseal offers excellent resistance to impact and temperature extremes. It also dispenses from a UPS-friendly shipper carton and is indexed on the back for easy measuring.

[www.arrowtruline.com](http://www.arrowtruline.com) ■

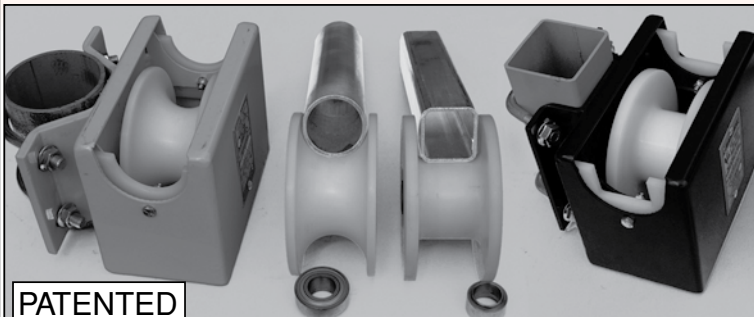
*continued on page 16*



- ★ PATENTED SOLID BOX CONSTRUCTION
- ★ NO ASSEMBLY REQUIRED
- ★ EASY TO INSTALL

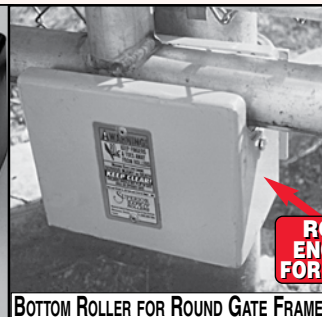
### FEATURES

- PRECISION MACHINED SOLID UHMW ROLLER
- PRELUBRICATED PRECISION DOUBLE SEALED BALL BEARINGS
- MAINTENANCE FREE
- GATE REQUIRES LESS EFFORT TO SLIDE
- EXTENDS LIFE OF ELECTRICAL GATE OPERATORS
- 10-YEAR BEARING WARRANTY



PATENTED

**ONE PIECE BOX CONSTRUCTION FOR MAXIMUM STRENGTH & SAFETY**  
 MOUNTING BRACKETS FOR 3", 3½", 4", 4½" & 6⅝" ROUND POST.  
 MOUNTING BRACKETS FOR 3" & 4" SQUARE POST.  
 ROUND PIPE OR SQUARE TUBE GATE FRAME.



BOTTOM ROLLER FOR ROUND GATE FRAME



TOP ROLLER FOR ROUND GATE FRAME

ROLLER ENCLOSED FOR SAFETY

Tel: (905) 828-7000 Fax: (905) 828-0089

[WWW.SUPERIORDOORANDGATESYSTEMS.CA](http://WWW.SUPERIORDOORANDGATESYSTEMS.CA) E MAIL: SALES@SUPERIORDOORANDGATESYSTEMS.CA



## Miller Edge Improves Invisi-Guard Photo Eyes

In April, Miller Edge announced that it is now shipping its Invisi-Guard thru-beam photo eye with a removable hood to protect against nuisance signals caused by weather conditions. The new hood easily slips over the transmitting lens.

The emitting eye is battery powered, eliminating the need to run wire across the opening and speeding installation time. A wired option is also available. An audible 85-decibel low-battery alarm is enclosed within the receiver to notify end users when it is time to change the batteries.

The transmitter and receiver are housed in NEMA 4 enclosures for indoor or outdoor applications. Invisi-Guard has a maximum operating range of 30' and a response time of less than one second. Invisi-Guard carries the ETL label and complies with ANSI/UL 325.

[www.milleredge.com](http://www.milleredge.com) ■



## Garaga Adds Three New Colors

In March, Garaga announced the addition of three new colors: moka brown (a dark brown), tundra (a greenish brown), and savana (a sand tone).

The additional colors

are the result of recent studies and client surveys. Nancy Labbé, marketing coordinator, says earth tones are increasingly in demand from homeowners to harmonize with everything from brick to imitation stone.

She adds that consumers in the larger urban areas of Canada are looking for light or dark shades of brown or green. Some suburban consumers are looking for bright colors like midnight blue, maize, or country red. Garaga now offers a range of 16 colors. [www.garaga.com](http://www.garaga.com) ■



## Janus Door Launches Mounting System



In April, Janus Door announced a new universal drive mounting system for rolling steel doors. The new factory prepunched universal headplates match up with unique and inexpensive transition brackets that allow new or retrofit mounting of chain hoists or front-of-hood-mount operators with only two bolts.

By using the same prepunched universal transition bracket, Janus offers chain hoist operation with sprocket and roller chain reduction or with cast gear reduction. Motor installation is enhanced and simplified by another prepunched universal transition bracket that mounts to the headplate and locks after tensioning the drive chain.

No field drilling is required for new or retrofit installation when using the Janus drive systems. They may be quickly retrofitted to any existing door.

[www.janus-door.com](http://www.janus-door.com) ■

## Martin Adds Another Layer of Insulation

In May, Martin Door announced that its garage doors are now available with a second layer of insulation, offering an R-value of 14. The new insulation will be contained under the regular insulation.

A standard Martin garage door with insulation has an R-value of 8. Dave Martin, chairman of the board, downplays the significance of R-value for energy savings in the garage, due to venting requirements in areas with combustible materials.

Doors with two or more sections of designer windows will require double-pane windows to maintain the R-14 rating. Doors with one or more extruded aluminum row sections will also require double-pane glass to maintain the rating.

[www.martindoor.com](http://www.martindoor.com) ■

## Genie Introduces DuraGreen

Overhead Door's Genie brand recently introduced Genie DuraGreen wood composite doors. Both the Manor House Series and Standard Panel Series feature DuraGreen technology, which results in an environmentally friendly product that has the look and feel of wood.

DuraGreen doors are certified by SCS (Scientific Certification Systems) to use a minimum of 88 percent recycled content and are made of unused, recycled Douglas fir and wood by-products, combined with exterior grade resins and wax. The door panels resist moisture, splitting, warping, or cracking and come prepped for painting or staining.

The Manor House Series features four styles: Regal, Tradition, Savoy, and Chateau. They are available in a variety of patterns, window and decorative hardware options, and an insulation option.

The Standard Panel Series offers four raised-panel and flush door designs: Classic, Venice I, Venice II, and Westwood. The Standard Panel Series also offers an optional insulation package.

[www.geniecompany.com](http://www.geniecompany.com) ■

## Raynor Products Qualify for Tax Credits

In May, Raynor announced its products that qualify for the federal energy tax credits. After conducting thermal testing, Raynor determined that these products qualify for the tax credit: Affina, Centura, Relante, Masterpiece, ShowCase, RockCreeke, and BuildMark STS.

A Raynor tax credit certification form has been posted at the Raynor Web site. It is accessible from the home page and on the specific pages for each compliant door. [www.raynor.com](http://www.raynor.com) ■

## Hörmann Flexon Debuts Speed-Master 1600



At Expo in April, Hörmann Flexon introduced the Speed-Master 1600 high performance door, designed for exterior or interior door openings up to 14' wide x 16' high.

New features include the Quick Connect HFC1 plug-in control box, opening speed up to 60" per second, and an exclusive "five and two" warranty. It includes Speed-Master's standard direct-drive motor/gearbox,

panel breakaway system, and low-profile guide tracks.

Another new Speed-Master, the Model 2600, is also available for openings up to 20' wide x 24' high. [www.hormann-flexon.com](http://www.hormann-flexon.com) ■

## Blue Giant Introduces Vehicle Restraint System

In April at Expo 2009, Blue Giant introduced the new SVR303 StrongArm vehicle restraint system, offering advanced functionality and security to loading dock operations. Its low-profile rotating arm engages the vehicle's rear impact guard at a 90-degree angle to secure the trailer to the dock with 35,000 pounds of restraining force.

"Industry studies show that falls from high places such as docks are one of the top four warehouse accidents," says Jeff Miller, vice president of sales and marketing. "Our new StrongArm vehicle restraint system can go a long way toward preventing these accidents and complying with OSHA regulations requiring that trucks and trailers be secured to the loading dock."

The StrongArm restraint's bright LED traffic lights confirm to inside workers and outside drivers that the restraint is properly engaged and locked.

[www.bluegiant.com](http://www.bluegiant.com) ■



## Rotary Gate Systems Debuts New Slide Gate Operators

At the FenceTech show in January, Rotary Gate Systems introduced the patent-pending SL-1000 gate operator, a new approach to automatic slide gates that offers a more aesthetically appealing, less obtrusive operator.

Michael Jones, president, says the SL-1000 presents a cleaner and more efficient package than existing chain drive operators. By attaching directly to the gate support post, the SL-1000 eliminates the need for a concrete mounting pad and disturbing of adjacent landscaping.

The UHMW nylon rack gear, which replaces the drive chain, attaches to a channel or angle mounted to the gate. Combined with an aluminum pinion gear, the opener is quieter and eliminates the rust stains, stretching, and adjustments associated with a chain. Jones says the SL-1000 and the SW-1000 swing gate version can be installed in half the time of conventional operators.

Rotary Gate Systems, based in Pensacola, Fla., recently partnered with Linear to make use of its easy-programming gate control, the Apex. The SL-1000 is ETL listed and complies with applicable UL 325 requirements.

[www.rotarygates.com](http://www.rotarygates.com) ■

## Raynor Adds Mixed Panels to Relante

In May, Raynor announced the addition of mixed-panel configurations to Relante residential doors. In addition to the standard ranch, colonial, and flush designs, Relante now features several mixed-panel options.

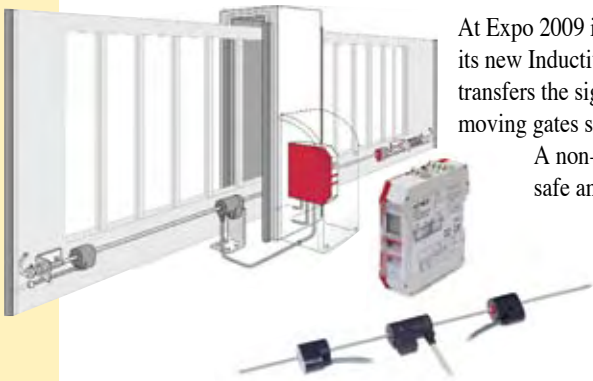
Relante doors' 1-3/8"-thick door sections offer polyurethane insulation for an R-value of 13.08.

[www.raynor.com](http://www.raynor.com) ■





## Bircher Reglomat Offers Signal Transmission System



At Expo 2009 in April, Bircher Reglomat debuted its new Inductive Transmission system (InTra6) that transfers the signal of safety edges on automatic moving gates securely to the stationary control unit.

A non-contact method is used to ensure a safe and abrasion-free (thus maintenance-free) signal transition.

The new InTra6 uses a converter for each mobile closing edge. Because of its extremely small and compact design, the InTra6 is easily installed. The

small coil can be turned on its side to make assembly even easier.

The plotting device with LCD display and convenient background lighting can be snapped onto a top-hat rail. It can be operated intuitively and is configurable for all sliding gate applications. A practical diagnostics mode reports the status of the safety edges, the last five error messages, and more. [www.bircherreglomat.com](http://www.bircherreglomat.com) ■

## Blue Giant Introduces Controllers for Loading Docks



In April at Expo 2009, Blue Giant introduced Blue Genius Touch Control Panels, a new line of microprocessor-based technology for operating dock levelers, vehicle restraints, doors, communications lights, and safety accessories — all from one smart-touch control panel.

Workers can now manage all the connected loading dock equipment from one control panel and ensure that each piece of equipment is in the proper position before others are activated. Wireless remote controls provide additional convenience.

The Blue Genius controllers provide accurate proximity sensing of the operator's finger. Operating without direct electrical contact with electrode metal, problems of wear, contamination, and corrosion are reduced. A multi-language LCD screen provides clear, real-time instructions for operations, maintenance, and diagnostics. [www.bluegiant.com](http://www.bluegiant.com) ■

## Agave Offers Customized Images of Decorative Hardware

In May, Agave Ironworks, a maker of hand-pounded iron decor for doors, gates, garage doors, and shutters, introduced a free full-color CAD service program for door dealers. The program offers the potential of high-profit add-on sales and improved customer service capabilities.

Agave Ironworks' Computer Aided Drawings (CAD) help dealers set themselves apart from the competition. The drawings allow a dealer's customers to view images



of finished doors with varying designs and decorative hardware combinations. The images can include a finish color, decorative hardware, and even surrounding features of the customer's home.

The dealer sends Agave the size and style of the door, the desired hardware style, and, if available, a photo of the customer's home. Agave takes the information and creates the CAD images for the dealer. Some conditions may apply. [www.AgaveIron.com](http://www.AgaveIron.com) ■

## Wayne-Dalton Launches Storm Stud Window System

In May, Wayne-Dalton and Muhler announced they had teamed together to introduce an attachment system called Storm Stud that builds storm protection into a window. Storm Stud is used in conjunction with Wayne-Dalton's Fabric Shield storm panels and various window systems.

The new Storm Stud provides automatic hurricane protection at an affordable price. This new system solves the installation and deployment challenges that plague steel corrugated storm panels. The Storm Studs can be inserted into the window frame during the manufacturing process or after fabrication.

By purchasing a window system with Storm Studs installed and a Fabric Shield panel that is custom made for that window, dealers will have a single source window- and hurricane-protection system. The builder simply installs the window incorporating the Storm Stud system and the structure is "hurricane-ready." [www.wayne-dalton.com](http://www.wayne-dalton.com) ■

