



Overhead Door introduces Impression Steel Collection

In December, Overhead Door launched the Impression Steel collection (series 5800) featuring new aesthetics such as tall section heights, large windows, and a full-section embossment design.

The first door in the series is the Model 501 with vertical raised panels and spacing for decorative hardware. The 7' door has three sections, allowing for large windows. Model 501 also has foamed-in-place polyurethane insulation between steel skins (R-value of 12). The doors are also available with windloading. www.overheaddoor.com ■

LiftMaster kit to support Siri and Apple Watch

In January, LiftMaster announced that it is bringing Apple HomeKit compatibility to the company's MyQ-enabled garage door openers, benefitting dealers who are installing in HomeKit-enabled homes.

Beginning in the second quarter of 2017, all LiftMaster residential garage door openers can be easily upgraded to work with HomeKit using the new MyQ Home Bridge (Model 819LMB), bringing new levels of convenience and control to consumers.

Users can open, close, or check the status of their garage doors and turn MyQ-connected lights on or off using the Home app via iPhone, iPad, iPod Touch, and Apple Watch. They can also control their garage doors and LiftMaster lighting control products with Siri voice commands, a feature that will also be available through the Apple Watch.

Users can also create scenes that enable multiple devices with a single command. For example, users can create a scene named "Coming Home" that turns the lights on, raises the thermostat, unlocks the door, and opens the LiftMaster garage door opener. www.liftmaster.com ■



MyQ Garage 2.0



Home Bridge

Skylink announces line of professional garage door openers

In January, Skylink announced its latest brand, Atoms Pro, for dealers and installers. Members of the Atoms Pro dealership program benefit from solid one-piece rails for easy installation, interchangeable chain or belt drives for flexible inventory, a designated support hotline, on-site training, free showroom samples and spare parts, and an annual volume rebate.

The openers feature a built-in LED light, back-up battery, a passcode-protected 3-button remote, numeric display for easy programming and diagnostics, DC motor, and IFTTT (If This Then That) capabilities to integrate with other connected home products. Atoms Pro is available in chain drive or steel-reinforced belt drive, and a SkylinkNet app is available for iOS and Android devices. www.skylinkhome.com ■



CornellCookson unveils EverGard Operator with battery back-up

In February, CornellCookson announced the new EverGard Operator with Battery Back-Up, which can be integrated into grilles, counter shutters, and service doors.

The battery back-up system allows users to operate the door for a minimum of 48 hours after power loss. The batteries are rechargeable and programmable from a separate control box that can be installed more than 100' away. The motor (up to 1/2 HP) fits in a Totally Enclosed Non-Ventilated (TENV) compact configuration.

The EverGard eliminates the need for a large and unsightly manual-release handle. Instead, the design features a compact emergency open button and uses its monitoring points to communicate information to security systems, such as open/close position, low battery voltage status, and AC power loss.

www.cornellcookson.com ■





TNR launches Park-King garage door

In April, TNR Doors will launch its new Park-King Door, a rubber high-performance door that fits into applications with limited headroom, down to 13".

Its unique bottom bar allows easy reset after an accidental impact. Its springless design and heavy-duty construction ensure a long life in the rugged high-cycle environment of parking garages. A sophisticated PLC controller and inverter drive ensure safe, speedy, and smooth operation with the easy addition of optional access controls and programming. www.tnrdoors.com ■

CornellCookson unveils next-generation high performance grille

In February, CornellCookson announced its Extreme 300 Series High Performance Grille. Designed to secure parking facilities, airports, and transportation hubs, this new system operates up to three times faster than standard coiling grilles, opening at speeds up to 24" per second and closing at 12" per second.

Designed to ensure maximum uptime, the Extreme 300 requires no maintenance other than routine checks and no replacement parts, delivering up to 300,000 maintenance-free cycles. The compact, direct-drive operator features the new Apex SmartController, CornellCookson's first intelligent panel that communicates status and error messages. The operator's variable-frequency drive ensures a soft start and stop, and doesn't have any sprockets or chains to wear or replace.

The grille is available in 180 colors of environmentally friendly powder coatings. Safety features include a continuous duty operator, an advanced control system, a self-lubricating guide design, a self-supporting installation option, and a patented, high-performance brake to prevent the curtain from free-falling in the unlikely event of operator component failure.

www.cornellcookson.com ■



DL announces QxV dock door

In February, DL Manufacturing premiered its QxV Flexible Sectional Dock Door, an affordable dock door that eliminates air and light gaps. Its flexible PVC panels offer an R-value of 22, ideal for dock or ramp doors.

DL says that its QxV panels resist damage from impact better than standard steel panels. Compression seals prevent air leakage at the sides, excellent for cold storage applications. QxV is available in vertical lift, standard lift, and high lift.

www.dlmanufacturing.com ■



Haas announces new powder-coated woodgrain finish

In February, Haas Door announced the expansion of its Residential Aluminum 360 Series to include 14 new powder-coated woodgrain finishes: Oregon Douglas, National Oak, American Douglas, Knotty Pine, Colony Maple, European Cherry, Table Cherry,

American Maple, Golden Oak, Teak, Cherry with Flame, National Cherry, National Walnut, and Dark Walnut.

The RA360 Series of high-end commercial-grade aluminum doors include tongue-and-groove section joints that also come in Clear Anodized, Dark Bronze Anodized, Black Anodized, Polar White, Almond, Sahara Tan, Sandstone, Gray, Painted Bronze, Brown, Hunter Green and Charcoal. Custom-matched colors and powder coatings are also available. www.haasdoor.com ■



Entrematic introduces MultiView Aluminum door

In February, Entrematic introduced a new MultiView Aluminum Door for residential (Amarr Horizon HO1000) and commercial (Amarr 3582) applications. The doors “offer the widest single piece of glass that specifications, safety, and reliability standards allow,” said Vickie Lents, vice president of marketing.

The doors feature split horizontal rails with equal glass height in all sections. The doors have no vertical center stile on the 8'-wide garage door with single-pane glass and are available in six anodized finishes and 26 paint colors. www.entrematic.us ■

Delden adds steel overlay door

In February, Delden added Steel Overlay Doors to its “Your Home Your Design” Collection. The door is customizable and can easily incorporate designs requested by customers.

“Delden can match the arch of the door opening and build the entire design to your customer’s specifications. If your customer does not want to design the entire door, they have the option to choose or modify from Delden’s provided photos and diagrams,” said Randy Pyle.

The product is available in three door models, eight color options, and three trim-board options. All trim board applications come without caulking and must be painted within 30 days to activate the warranty.

All steel trim doors can meet wind-load requirements, and two models come standard with thermal breaks. The R-values of the steel trim collection range from 6.48 to 9.05. www.deldenmfg.com ■

Door design by Paul Bradley of Delden



Marantec introduces new transmitter design

In February, Marantec unveiled the Digital 384, a new transmitter design in glossy white, in addition to the standard 2-channel, 3-channel, and 4-channel remote controls. This 4-channel remote operates on 315MHz and is HomeLink compatible.

Digital 384 can be used with all Marantec 315MHz operators and external receivers. www.marantec.com ■



Arm-R-Lite launches awning windows

In January, Arm-R-Lite announced its exclusive push-out awning windows that can be fabricated into any new Arm-R-Lite glass and aluminum garage door.

Available for commercial and residential applications, awning windows allow customers to open a window within the garage door for ventilation. The windows are easy to operate and available for both fixed and operational garage doors. Custom colors and screen options are available. www.arm-r-lite.com ■



New Dynaco door improves wind resistance

In February, Entrematic North America introduced the Dynaco D4, “the next generation of gravity-assisted high performance doors.”

The D4 retains the slim design and quiet operation of other gravity doors, but also offers increased resistance to high winds/pressure without wind ribs or bottom bar components that can pose a safety hazard. Instead, the door’s speed and safety is the result of an inventive edge retention system. If the door separates from the side-guides, the patented re-introduction blocks reset the door without manual intervention.

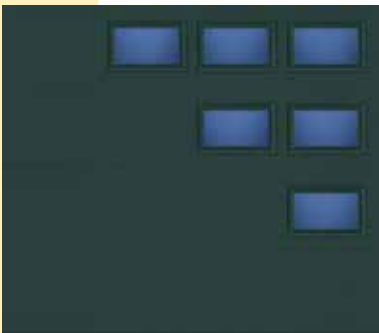
The Dynaco D-411 has a 1-HP motor that achieves a Class 1 [EN] static wind load for high-cycle interior applications. The Dynaco D-421 has a 2-HP motor that achieves a Class 2 [EN] static wind load for sheltered docks and other industrial applications with a high air-pressure differential between spaces. www.dynacodoor.us ■

Entrematic offers Mosaic window options

In February, Entrematic added Mosaic window options to its Amarr Stratford, Lincoln, Heritage, and Olympus collections in single-, double-, and triple-layer construction. The window options allow for the placement of short- and long-panel windows in any standard position in any section of flush, ribbed, short-panel and long-panel door designs.

“The Mosaic window options are a way to add substantial visual interest to garage doors and, at the same time, help control the amount of light coming into the garage,” said Vickie Lents, vice president of marketing.

www.entrematic.us ■



EMX launches new wireless edge link

In February, EMX announced its new WEL-200 system, a wireless solution for interfacing sensing edges with gate and door operators. The Wireless Edge Link eliminates the wiring between the safety edge and operator control box, reducing labor and material costs. Compliant with 2016 UL 325 standards, the WEL-200 is compatible with NC, 10K, and pulse monitoring.

The WEL operates at up to 200' between transmitter and receiver. The transmitter is battery powered, and the receiver connects with up to four transmitters with separate relay and pulse outputs for open-and-close edge functionality. The WEL-200R is NEMA 4X rated, allowing for easy, reliable outdoor installation.

In 2017, EMX marks its 30th anniversary. www.emxinc.com ■

LP Building Products debuts garage door overlays

In February, LP Building Products announced the launch of LP PurposeBuilt, a series of garage door overlays made with LP’s premium engineered wood. The overlays create a premium look while offering ease of use for garage door manufacturers.

“Garage door manufacturers and dealers will now have a valuable new solution to offer homeowners who are looking for high-quality garage doors at an affordable price,” said Adina Barnes, LP business development manager.

LP PurposeBuilt overlays feature a cedar grain and are manufactured with a proprietary process to help resist fungal decay, termites, and harsh environments. The overlays can be easily cut and secured to garage doors. www.lppurposebuilt.com ■



Entrematic adds 40' commercial doors

In February, Entrematic introduced commercial doors up to 40' wide, ideal for farming operations and construction machinery and production facilities.

The doors feature extra-heavy-duty hardware, rollers, lift brackets, and special 8" reinforcement struts. They are available in the 2" polyurethane-insulated Amarr 2742 (27-gauge steel exterior) and Amarr 2042 (20-gauge).



The doors are available in widths up to 40'2" and heights up to 26'1". The width and height combination cannot exceed 2,200 lbs. www.entrematic.us ■

Hörmann announces updates for high-speed doors

In January, Hörmann High Performance Doors introduced several new product updates, including its Smart Start NXT NEMA 4X control box, which will be standard on nearly all models. It includes more power,



fewer components, and a color-coded distribution block.

With the new control box, additional parts are no longer needed for voltage changes in the field. Extra ports allow for firmware upgrades and future expansion, and a USB port is included for maintenance monitoring.

In addition, the new Speed-Guardian 5000 Series of high performance rigid doors will replace the Speed-Guardian 4000 Series. The 5000 Series features 10"-high x 1-5/8"-thick slats with improved thermal breaks, the Smart Start NXT control box as standard, and optional tinted vision slats for privacy. www.hormann-flexon.com ■

continued on page 18

MORE
THAN JUST
GARAGE
DOORS

YOUR PARTNER FOR SUCCESS

PERSONAL SERVICE. INDUSTRY KNOWLEDGE. EXPERIENCED ADVICE.

As a small business ourselves, we know and understand the small business challenges you face each day. From growing staff, to launching a new product, to balancing the books, we've walked in your shoes and we're here to help. Yes, we've been manufacturing quality-built residential & commercial garage doors for over 50 years, but even more importantly, North Central Door is the business partner you can count on.



800-677-8431 ■ WWW.NORTHCENTRALDOOR.COM

www.northcentraldoor.com/dealers

Clopay showcases new designs at Builders' Show

At the 2017 International Builders' Show in Orlando in January, Clopay exhibited the new Canyon Ridge Modern Series of polyurethane-insulated faux-wood garage doors. Its customizable door designs feature horizontal lines, sleek window packages, and aluminum accents. Sizes range from 6'2" to 20'2" wide in heights up to 10'. The Canyon Ridge Modern Series will be available in February.

At the show, Clopay also highlighted its Canyon Ridge Limited Edition Series, Craftsman, and Smooth Fiberglass Collections. A plantation-style, louvered Reserve Wood Collection garage door was featured on the 2017 New American Remodeled Home. www.clopaydoor.com ■



Metal Inlay



Narrow Windows

Telco releases new high-power sensor

In January, Telco Sensors announced the new SpaceMaster 9000 Series of high-power, multi-frequency sensors.

The self-contained thru-beam sensor system features a range in excess of 230', an IP69K water- and dust-tight rating, a 100,000-lux sunlight immunity, and a 3-year warranty. The 9000 Series receiver is available with a transistor or a solid-state relay output, while the transmitter features a test input for UL 325 compliance.

The new sensor also offers four wire-selectable frequencies, allowing multiple sets of eyes to be installed in close proximity without cross talk.

www.telcosensors.com ■



continued on page 20



safewaydoor.com
877-775-1670



CHECK OUT...

The contemporary good looks of the Ventana Collection by Safe-Way Garage Doors. Multiple window and color options let your customers express their artistic side.

Elegant enough for residential applications and sturdy enough for commercial and industrial projects.



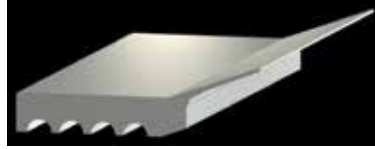
Safe-Way Door's new Ambient Series line of garage doors is this year's "must have" for an ever increasing population of energy conscience consumers. Combining the ruggedness and good looks of our current line-up and the Ambient Series thermal section break, they are sure to be a top sellers for any residential, industrial or commercial application. The high-density polyurethane core not only gives the Ambient Series superior insulation from summer heat and winter cold, but also provides more strength, performance and durability.

For more information, contact Safe-Way Door sales at 615-504-0220 or email bthompson@safewaydoor.com.

Royal introduces enhanced Thermo Stop

At the 2017 Garage Door Expo in April, Royal Building Products will introduce its enhanced Royal Uniflex Garage Door Thermo Stop.

The new Thermo Stop features a flex-mount design that accommodates both top- and side-mount applications. Flex adhesion has been increased by 75 percent for less waste during installation. Improved uniformity reduces flex distortion issues. It is available in 2", 2-5/8" (Retro), and 3-1/4" (Architectural). www.royalbuildingproducts.com/garage ■



Raynor expands wind-load offering

In February, Raynor announced an expanded wind-load offering and new Florida approvals on several door models.

Raynor has received Florida HVHZ (Miami-Dade NOA equivalent) approval on the AlumaView AV300 up to 16'2" wide with impact rating. The AV300 features integral (hidden) trussing for an unobstructed view.

Raynor has also received Florida impact approval on the TC200 doors with up to two rows of full-view impact windows and widths up to 18'2". Non-impact-rated TC200 with conventional windows also received approval up to 18'2" wide. www.raynor.com ■

Guardian adds nylon garage door hinges

In November, Guardian Access & Door Hardware added nylon garage door hinges to its hardware offering. The new hinges are made of corrosion-resistant, high-strength glass-filled nylon. A nylon roller bracket is insert molded onto a powder-coated 14-gauge steel bracket, eliminating metal-to-metal contact and providing added strength.

Ideal for coastal environments, these nylon hinges eliminate squeaks, noise, and corrosion. They also reduce door vibration and eliminate the need for lubrication. Hinges are available in sizes #0 through #4 and in black or white.

www.adhguardianusa.com ■



continued on page 22



RAPIDO™ TWICE AS FAST

2X FASTER*

OPEN AND CLOSE YOUR DOOR TWICE AS FAST WITH A RAPIDO OPERATOR FROM MANARAS-OPERA.

The RAPIDO™ features a door speed up to 2 times faster than standard models available to the commercial and industrial door market.

The RAPIDO™ increases the longevity of the complete door system, designed to speed-up industrial standard lift sectional doors while smoothly managing soft-starts and soft-stops.

CHOOSING THE RAPIDO™ IS SIMPLE WHEN TIME AND ENERGY SAVINGS IS A MUST.

On-board control and monitoring of external entrapment protection devices, provide speed managing features and enhanced performance and reliability.

*The RAPIDO™ operator is up to 2X the speed of a standard jackshaft operator.

CALL US FOR MORE INFORMATION: 1-800-361-2260

www.manaras.com



- MEMBER OF THE CANIMEX GROUP -

Gavazzi announces long-range photoelectric sensors



In January, Carlo Gavazzi introduced its new PD140 Series Long Range Photoelectric Sensors for door and gate access applications. This rugged high-performance sensor is ideal for harsh outdoor use, and its aluminum and polycarbonate housing protects the sensors against vandalism.

Its outdoor sensing range is up to 200', and its range in controlled indoor environments is up to 400'. With the optional APD140-LA01 Green Laser Alignment Tool, alignment of the PD140 can be done in seconds, even at distances longer than 200'. www.gavazzionline.com ■



Schweiss announces interlocking insulated panels

In January, Schweiss Doors announced its new interlocking insulated panels, which can be installed quickly and cost effectively for a well-insulated, high R-value door with a glossy white cleanable and durable finish.

These interior lightweight durable panels with interlocking edges fasten to the exterior of the doorframe, reducing installation time. The insulated panels are available in 1-3/8", 2-3/8", and 3-3/8" thicknesses. Standard panels are 4' wide and can be ordered in multiple lengths. www.bifold.com ■

Re-Source adds commercial operators and parts

In February, Re-Source Industries announced the addition of LiftMaster and Linear commercial operators and replacement parts.

In addition to its Manaras operators, Re-Source now offers LiftMaster commercial medium-duty and heavy-duty trolley operators, jackshaft and hoist operators, gearhead jackshaft operators, and DC jackshaft operators for immediate shipment. Replacement parts for these operators and residential

and commercial radio controls and accessories are also in stock.

Re-Source also offers Linear commercial medium-duty and heavy-duty jackshaft operators, MGO medium-duty gearhead operators, and heavy-duty trolley, jackshaft, and gearhead operators. Additionally, Re-Source stocks Allstar commercial radio controls and Linear replacement parts.

www.re-sourceind.com ■

TOTAL SOLUTIONS FOR YOUR SECTIONAL GARAGE DOOR MANUFACTURING NEEDS

idaExpo®

Booth #915

April 21 - 22

Atlanta, GA

THE BRADBURY GROUP



- Sectional Door Roll Forming Lines
- Slat Roll Forming Lines
- Strut Roll Forming Lines
- Track Roll Forming Lines
- Stile Roll Forming Lines
- Angle Roll Forming Lines
- Bottom Bar Roll Forming Lines
- Continuous Insulated Production Lines
- Discontinuous Insulated Production Lines
- Stile Hole Mid Punch
- HD Cavity™ Press
- Rotary Embossing Machines



bradburygroup.com

bradbury@bradburygroup.com

620.345.6394