



Cornell and Cookson Introduce High-Speed Rolling Steel Door

In March, Cookson and Cornell announced a coiling door that travels three times faster than traditional rolling steel doors and offers over one million cycles. The models are Cornell's Extreme 1024 Performance Door and Cookson's Cycle-Master 1024 Performance Door.

The 1024 design can withstand a maximum wind load of 20 psf. They feature an inertia brake for added safety and are reportedly the only high performance doors to meet the Underwriters Laboratories (UL) 325-2010 entrapment protection requirements.

The companies say that the 1024 doors have the lowest lifetime cost and lowest cost per cycle when compared to other high-speed slatted products. With a limited five-year warranty on mechanical and electrical components, the doors' special finish and patent-pending anti-wear device help preserve aesthetics. www.cornelliron.com, www.cooksondoor.com ■

TNR Launches ChillFast Springless Door

At Expo in April, TNR Industrial Doors launched its springless ChillFast door, an insulated fabric door for high-traffic cold-storage applications.

The doors feature an impactable curtain and bottom bar with an auto reset that eliminates downtime and increases energy conservation. The ChillFast can be manufactured up to 12'0" x 16'0" and operates up to 75" per second with a direct-drive operator that has a soft-start/soft-stop frequency drive and self-diagnostic control panel. A heating system in the guides and bottom bar prevents ice build-up. www.tnrdoors.com ■



Guardian Partners With Micanan CDOs

In April, Guardian Access & Door Hardware and Micanan Systems announced a partnership supply agreement for commercial door operators. Under the agreement, Guardian will offer the full line of Micanan commercial and industrial garage door openers, control panels, and gate operators.



In addition to Micanan distribution centers in Toronto, Phoenix, Atlanta, and Dorval, Quebec, Micanan operators will now be available from Guardian distribution centers in Los Angeles, Chicago, and Miami.

At Expo in April, Guardian also exhibited two new residential garage door openers. The model 425 is a 1/2-HP, two-light, AC operator, and the model 615 is a 1/2-HP equivalent DC operator. All Guardian operators can be configured with chain or belt and T-rail or C-rail.

www.adhguardianusa.com ■



C.H.I. Introduces MLB-Themed Garage Doors

At Expo in April, C.H.I. Overhead Doors introduced MLB Accents, a door option that provides customers with any of all 30 major league baseball logos on a C.H.I. door.

MLB Accents is available for interior applications on models 2216, 2283, 4216, 4283, 5216, 5283, 5916, and 5983 and for interior/exterior applications on models 2217 and 2284. www.chiohd.com ■



ATL Introduces S3 Winder at Expo

In April at Expo, Arrow Tru-Line launched its S3 Winder, a single-piece universal spring winder. The S3 replaces standard 3-3/8" offset spring anchors and can be wound with a cordless drill and 7/16" socket.

Designed for residential doors up to 400 lbs. and 8' tall, the S3 works with single- or dual-spring applications. It winds two springs at once and is compatible with standard 1-3/4" and 2" torsion springs.

www.arrowtruline.com ■



Airlift Introduces 500,000-Cycle Apartment Doors

In May, Airlift Doors introduced the ADS Apartment Door Series for parking garages. The doors are made for quiet operation, work without torsion springs, and are rated for 500,000 cycles.

The ADS door allows light to pass through and features Airlift's patented Strapeze counterbalance system that lasts five times longer than springs. It fits in tight spaces with only 12" of headroom.

The door is compatible with pneumatic or electric operators and is wind-rated to 90 mph. It is available with plastic hardware upgrades, three anodized color options, and three polycarbonate color options.

www.ADSApartmentDoor.com ■

Garaga Launches New Polystyrene Door

In May, Garaga announced Triforce, a new insulated residential steel garage door. At 2" thick with a rigid panel of polystyrene and a thermal break, Triforce offers an R-value of 10. Its panel end pieces are made of wood blocks for an efficient thermal break.

The door features 26-gauge steel, hot-dipped galvanized on both sides, and comes in many panel designs and six colors: ice white, desert sand, claystone, dark sand, moka brown, and evergreen. Triforce is available in single panes or double-paned sealed windows and in sizes from 8' to 18' long in 1" increments and 6'6" to 8' tall in 3" increments. www.garaga.com ■



Guardian Launches SecuRemote Technology

In April at Expo, Guardian Access & Door Hardware announced a partnership with Delphian Systems to include SecuRemote Bluetooth technology in Guardian GDOs.

SecuRemote makes products interoperable with mobile and personal Bluetooth devices. A garage door opener, lock, or other device equipped with SecuRemote can be operated directly through a smartphone without the need of a gateway.

The wireless communication is transparent to the user and is handled through the free SecuRemote app. Through its mobile network, a user's smartphone also communicates with securemoteonline.com, a system that allows the user to manage, monitor, and control all devices.

Bluetooth offers less power consumption, proven security, and communication within a range of 120'.

www.adhguardianusa.com ■



TNR Announces High-Speed Aluminum Door

At Expo in April, TNR Industrial Doors introduced the springless HSR-007, a high-speed aluminum roll-up door offering aesthetics, high speed, and security.

The door has a clear anodized aluminum finish on the exterior with PVC interior backing to reduce operational noise. The HSR-007 comes in standard sizes up to 19' x 19' and operates up to 65" per second. Its direct-drive operator has a soft-start/soft-stop frequency drive and self-diagnostic control panel.

The HSR-007 is available with vision slats and all activation devices. www.tnrdoors.com ■

LiftMaster Adds Dual-Sided Photo Eyes and Safety Edge

In March, LiftMaster announced a new generation of dual-sided photo-eyes and safety edge systems that speed installation and offer enhanced benefits for CDOs.

CPS-OPEN4 monitored dual-sided photo-eyes feature adjustable brackets for easy, quick, and accurate installation. They are also protected by a flexible rubber housing to absorb minor contact and use a polarized beam for simpler and faster alignment.

The CPS-OPEN4 is covered by a NEMA 4X-rated waterproof enclosure and approved for use on LiftMaster Logic 4.0, standard-duty, medium-duty, fire door, and egress operators.

LiftMaster also has new Optical Edge Systems available in pre-configured kits for 16' and 24' sectional doors and 16' rolling doors. Using premium-rubber edges for cut-to-fit flexibility and dependable performance, the Optical Edge Systems are equipped with color-coded sensors to ensure correct sensor identification. They are NEMA 6-rated for resistance to standing water when edges are exposed to both inside and outside elements.

www.liftmaster.com ■



continued on page 12



experience the
METAL COATERS
difference

With Metal Coaters, Color Counts but More Matters: more flexibility, more reliability, more service, and more quality. We work hard to uphold our brand promise of being the only coil coating company "Where More Than Color Matters." Experience the Metal Coaters difference at www.metalcoaters.com/the_difference.



CONTACT US NOW



Overhead Door Adds Arched-Top Windows

In April, Overhead Door announced arched-top window options for its Impression Collection of wood-grain fiberglass doors.

Red Ribbon distributor customers selecting a single-car garage door can choose among six arched-window options that range from a plain-window arch to a 20-window arch. Double-car garage doors offer a choice between a double arch with 12 windows in each or a single-window arch with 24 windows. www.overheaddoor.com ■

Life is Easy with



Buy the best commercial and residential controls directly from the manufacturer. Vee builds durable, high-quality, reliable controls for the Garage Door and Gate Industry.



2 BXL



3 BXL

Since 1969, our goal has been to provide you with excellent customer service. We pay personal attention to every order — especially yours.



D-2-3



1 KSMX



WPS-1

**Custom
Controls
Available**



7G4 PBS 3

Call 1-800-327-3332

Email: sales@veeindustries.com

www.veeindustries.com



VEE INDUSTRIES, INC.

MANUFACTURED IN BOYNTON BEACH, FL



Garaga Adds R-18 Industrial Door

In March, Garaga added the G-5200 industrial garage door with injected polyurethane foam and thermal break for an R-value of 18. The door is available in thicknesses ranging from 1-3/8" to 2".

The new G-5200 features 26-gauge steel in Ice White color, a polyester-based paint with one base coat and two topcoats. Available sizes range from 8' to 24' long and from 8' to 18' tall (in 3" increments).

Now with 10 industrial door models, Garaga steel doors use recycled materials and qualify for points on LEED projects. www.garaga.com ■

C.H.I. Adds Three Rolling Steel Models

In March, C.H.I. Overhead Doors announced three new rolling doors: an aluminum service door (model 6244), a stainless steel service door (model 6266), and a stainless steel fire door (model 7366).

All three use the new F2.7 flat slat configuration. These new doors are designed for high-humidity environments, kitchens, and corrosive environments. www.chiohd.com ■



Clopay Introduces Custom "Cool Paint" Program

In May, Clopay announced its new Color Blast custom paint program with over 1,800 colors available for Clopay's Avante, Gallery, and Classic residential garage doors and all commercial steel doors. Matching window frames are offered on Clopay residential garage doors.

The Color Blast process uses Sherwin Williams Solar Reflective Polane paint, a "cool paint" that lowers surface temperatures to reduce the damaging effects of high heat. The paint also contains a hardener for extra protection.

Prior to launch, Clopay's Color Blast paint system exceeded 3,000 hours of salt spray and humidity testing. The finish has a five-year warranty and also meets Florida's five-year exposure requirements. www.clopaydoors.com ■

Hörmann Introduces TimberLast Finish Doors

In May, Hörmann launched TimberLast Finish doors, steel doors with the look of natural wood. The Orion 3110/3210 collection with TimberLast finish comes standard with Hörmann's exclusive FingerGuard pinch-resistant section joints for both the interior and exterior. They come in 1-3/8"- or 2"-thick steel sections in a three-layer sandwich construction with expanded polystyrene.

The new doors come in Traditional, Ranch, Country, and Cottage designs and in medium oak, dark oak, walnut, and rosewood colors. The doors are reportedly backed with "the most comprehensive warranty package available in the industry."

The Orion 3210 model is also available with the Hörmann Extreme Package that includes the commercial grade hardware and roller holders, 3" heavy-duty struts, extended-cycle springs, and an extended lifetime warranty on all door components. www.hormann.us ■



continued on page 14

Time to "Cut the Cord"...

INTRODUCING

MEL))

Monitored Edge Link

A new wireless breakthrough that eliminates coil cords and retracting reels...

MEL transmitter/receiver eliminates the need to hardwire a monitored edge sensor to the door operator. Attach MEL to currently Listed UL325 commercial door operators - when the edge sensor is activated, MEL sends a wireless signal to the operator to reverse.

- **MEL MONITORS:** constantly for a loss of signal transmission or fault in the system
- **MEL IS UNIVERSAL:** no separate module required
Use with any monitored Sensing Edge
Use with non-monitored ancillary Sensing Edges
Use with nearly every commercial door operator



P.O. Box 159 • West Grove, PA 19390 • 610-869-4422 • 800-220-3343
6809 S. Hari Avenue, Suite A, Tempe, AZ 85283 • 480-755-3565 • 800-887-3343
info@MillerEdge.com

www.milleredge.com

Overhead Adds New Thermacore Finishes and Windows

In March, Overhead Door announced two new wood-grain finishes, two new paint color options, and five new window configurations for its Thermacore premium insulated steel garage doors.

The wood-grain finishes are walnut and golden oak in realistic bi-directional grain, and the two new paint finishes are black and gray. The five windows are Stockbridge designs in 2-3 and 2-4 configurations and Stockton designs in 2-4, 2-6, and 2-8 configurations. Each window option features thinner mullions and 33 percent less plastic material around the perimeter to increase natural light. www.overheaddoor.com ■



C.H.I. Adds Two Models to Accents Woodtones

In April, C.H.I. announced two new micro-grooved Accents Woodtones: 3216P and 3285P.

C.H.I. distributors report that this product is increasing their ability to add designs that enhance a home's architectural appeal, according to Merle Miller, marketing specialist.

Accents Woodtones doors are available in cedar, mahogany, dark oak, and light oak. www.chiohd.com ■



When you think
Commercial Door OPERATORS,
just think OPERA.

Manaras-Opera is pleased to offer UL325-2010 compliant Commercial Door OPERATORS to the market. Over the years, the OPERA brand name has become synonymous with innovation and reliability and our products only continue to get better.

Call us for more information
1-800-361-2260

www.manaras.com

Raynor Enhances AccuFinish and OptiFinish

In May, Raynor announced an improved color match on its AccuFinish frames, inserts, and climate seals. Its four AccuFinish colors look like natural wood and use a maintenance-free laminate film for resistance to UV rays.

Raynor also announced the expansion of its OptiFinish post-paint offering to include BuildMark, TradeMark, Commercial BuildMark, Commercial TradeMark, DesignForm, TC200, and StyleForm doors. Previously offered only on the Innovations and Traditions series, OptiFinish offers more than 1,800 colors of Sherwin Williams BP Enamel paint in a third layer of protection. www.raynor.com ■

EMX Introduces New Photo-Eye

In May, EMX Industries introduced the IRB-HB, a monitored, weatherproof, NEMA 4X thru-beam infrared photo-eye for automatic gates and doors.

This device is a UL 325-2010-compliant component suitable for use with operator types that require a frequency (heartbeat) for monitored operation. It features long-range capability, installer-mode switch settings, and a lens-less design to minimize fogging.

www.emxinc.com ■



Artisan Launches Steel Doors With Faux-Wood Overlays

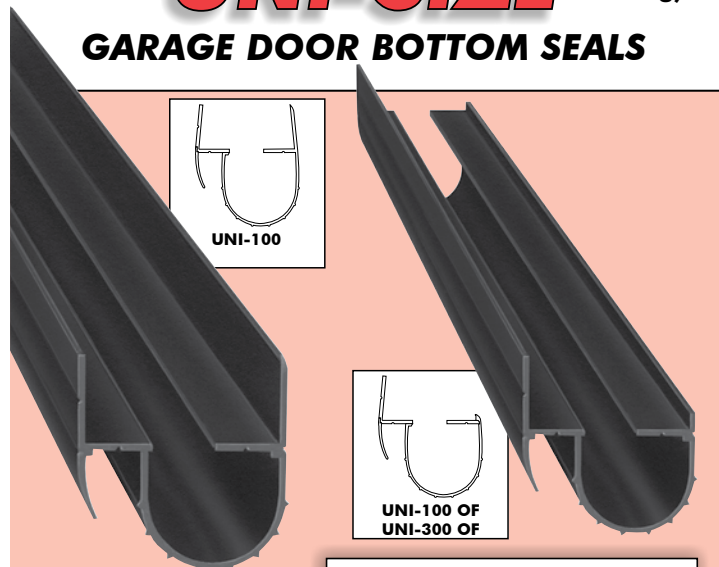
In May, Artisan Custom Doorworks announced the Quartet series of steel doors with 1/2"-thick and 5"-wide faux-wood overlays.

The overlays can be stained in golden oak, dark oak, or cherry or painted in colors of almond, bronze, brown, charcoal, green, taupe, white, or window gray. The doors come in swing, barn, and trifold styles.

The sections feature a 1-3/8" polyurethane steel base with a natural-looking oak finish. With an R-value of 12, Quartet is warranted with a lifetime limited guarantee against rust-through, five years on the hardware, and five years against delamination.

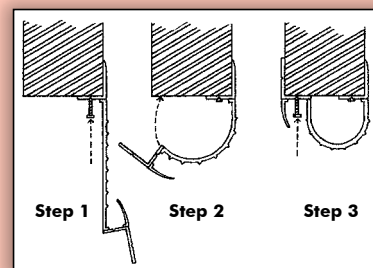
www.artisandoorworks.com ■

"SEAL THE DEAL" WITH OUR SUPERIOR DESIGNED UNI-SIZE (Patent Pending) GARAGE DOOR BOTTOM SEALS



NO NEED TO STOCK VARIOUS SIZES

Advanced Plastic's SUPERIOR design utilizes our bulb and wiper design which will adjust to fit most standard door widths between 3/4" thru 3 1/2". Available in our original cap style (UNI-100) bottom seal or the open face style (UNI-100 OF and UNI-300 OF).



- ONE PIECE DESIGN FOR EASY INSTALLATION
- MOUNTING SCREWS REMAIN HIDDEN
- TRIPLE CONTACT DUAL DUROMETER CO-EXTRUSION RIGID AND FLEXIBLE PVC

- AVAILABLE SIZES:
- UNI-100 & UNI-100 OF (FITS 3/4" THRU 2" WIDTHS)
 - UNI-300 OF (FITS 2" THRU 3 1/2" WIDTHS)

All products available from these reliable distributors!



For complete information call or visit our website...

ADVANCED PLASTIC CORP.

WWW.ADVANCEDPLASTIC.COM
3725 W. LUNT • LINCOLNWOOD, IL 60712
Phone: 800-708-7527 • Fax: 847-674-2072

13KA-3

Linear Launches Enterprise Access Control

In April, Linear introduced Linear Enterprise, a browser-based access control system for large-scale installations. Enterprise offers remote management, low total cost of ownership, an easy path to VMS integration, and a unique license key system for easier integration and expansion.

“We are offering exclusivity to top dealers who have experience handling the complexities of large installations,” says Duane Paulson, senior vice president of product and market development.

Linear’s Remote Management Console allows dealers to provide secure offsite management for one or many systems without having a server in the cloud. It also gives end users the ability to make immediate changes even in emergencies and loss of Internet service.

Its solid-state design lowers costs by removing many of the license fees, simplifying installation, lowering hardware costs, and providing a flexible and secure Linux system at the core. There are no monthly cloud service fees, no client and database license fees, and no need for dedicated PC workstations.

www.linearcorp.com ■



Amarr Adds Long-Panel Beadboard

In May, Amarr announced that its long-panel beadboard design is now available as part of the Amarr Oak Summit 3000 and Hillcrest 3000 steel garage door lines. The stamped design simulates the look of a traditional wood carriage house door.

The long-panel beadboard option is available in all 11 colors in the Oak Summit 3000 line and the four colors in the Hillcrest 3000 series. www.amarr.com ■

continued on page 18

WORK SMARTER, NOT HARDER.

WATCH VIDEO



Quick Roller Change Tool

•Change 10 rollers in less than four minutes!



DENCO

Where Door Pros Go!

Order Placement Call Toll Free 1-800-852-9884 www.dencodoorstuff.com

When Quality Matters, Choose...

Fehr

Quality without Compromise
Fehr Bros. products are manufactured to the highest standards



The Installer's Choice

Fehr Bros. Industries, Inc.

Phone: 800-431-3095

Fax: 888-352-1790

www.fehr.com/door

NewsLines

products

Linear GDO Controller Wins Best New Product Award



In April, Linear announced that the Security Industry Association (SIA) selected Linear's Z-Wave GDO remote controller as Best New Product in the Residential and Monitoring Solutions category.

Linear's controller is the first UL 325-2010-compliant device flexible enough to work with virtually any automatic garage door opener driving a sectional garage door. It is embedded with a Z-Wave smart chip that enables two-way RF communication between hundreds of other Z-Wave-enabled devices.

The wireless controller was also honored at ISC West for being Z-Wave's 1,000th certified product, making Z-Wave the most broadly adopted wireless protocol for home control and automation products worldwide.

www.linearcorp.com ■



Advanced Plastic Adds Bottom Seals and Retainers

In May, Advanced Plastic announced two new open-face styles of its uni-size bottom seal. The new styles eliminate the outside edge.

Uni-100 is designed to fit virtually all garage doors from 3/4" to 2" thick, and the Uni-300 is for doors 2" to 3-1/2" thick. The seals feature triple-contact, co-extruded, dual durometer PVC material.

The company has also added several 2" universal bottom seal retainers. The UR-200 has one vertical leg for an open-face look while eliminating the outside edge.

The URF-200 is flat with no legs. Both retainers are made of rigid PVC with two 5/16" "T" slots.

In addition, "black" door stop or stop molding is now offered in 2" as well as 2-5/8". This hollow-style door stop is available in 11 colors and matching colored nails. www.advancedplastic.com ■