

A Publication of Door + Access Systems Newsmagazine

# d+as SHOW GUIDE

## What You Missed at Expo 2016 and Fencetech!

### Our Exclusive Report

- Expo 2016, Las Vegas
- Fencetech 2016, Nashville



POSTNET STD  
U.S. Postage  
**PAID**  
Cleveland, OH  
Permit No. 1723



**BUSY VEGAS SHOW:** Mark your calendar for next year's show in Atlanta, April 21-22, 2017.

The *D+AS Show Guide* is a special DASMA publication that informs you of key exhibits at the International Garage Door Expo held in Las Vegas from April 27-30 and at Fencetech in Nashville from Jan. 12-15, 2016.

**Our Pages** feature industry companies that invested in this extra effort to inform you of key announcements, services, or products at their exhibits.

**Our Readers** are 20,000 professionals in the door and access systems industry throughout North America.

**Our Advertisers** are DASMA members that exhibited at this year's Expo or at Fencetech. To learn about advertising in the next Show Guide, go to [www.dasma.com](http://www.dasma.com) and look under Publications.

#### For More Information

##### Editorial

Tom Wadsworth  
[trw@tomwadsworth.com](mailto:trw@tomwadsworth.com)

##### Advertising

Ann Marie Cunningham  
[ann@cunninghambaron.com](mailto:ann@cunninghambaron.com)

##### Address Changes

Rachel James  
[rjames@thomasamc.com](mailto:rjames@thomasamc.com)

##### DASMA

John Addington  
Executive Director  
1300 Sumner Avenue  
Cleveland, OH 44115-2851  
216-241-7333  
[www.dasma.com](http://www.dasma.com)



## TABLE OF CONTENTS

Airlift Doors .....	21
Arrow Tru-Line .....	5, 36
ASO Safety .....	35
Canimax.....	Back Cover
Clopay.....	22
DBCI .....	40
DoorKing .....	43
Dow Chemical .....	25
EMX.....	28
Entrematic.....	39
Haas Door .....	2
Janus.....	6
LiftMaster.....	9
Linear Pro Access .....	17
Marantec.....	47
Miller Edge .....	10, 48
National Door Industries .....	13
Northwest Door.....	14
Raynor .....	31
Service Spring .....	27
Skylink .....	52
Sommer .....	32
Upwardor .....	18, 44
Wayne Dalton .....	51



## Haas expands options in American Tradition Series



▲ **NEW COLORS AND WINDOWS:** *Haas has added eight new colors in its American Tradition Series. Pictured: Charcoal.*

The Haas Door booth featured its eight new colors and four new window options in its American Tradition Series of residential garage doors. The eight new colors in base and overlays are cool black, charcoal, hunter green, brown, Trinar brown, Trinar beige, Trinar white, and bronze.

The additional window options are available in the four- or eight-pane designs in both plain and arched styles. These color and window additions

create a total of 9,480 possible design combinations in the American Tradition Series. The new combinations give dealers more to offer, allowing homeowners to mix and match their doors to coordinate with the style and color of their homes.

### Miami-Dade certification

Haas Door also now offers doors that have received Miami-Dade County's Notice of Acceptance (NOA). The NOA certifies that these doors conform to High Velocity Hurricane Zone (HVHZ) provisions and Miami-Dade requirements. The approved doors feature Haas Door's patented E-Strut. [www.haasdoor.com](http://www.haasdoor.com)



# Open the door to endless possibilities.



Haas Door is a different kind of manufacturer. We're a family owned and operated company, just like many of our dealers. Our method is simple. We hire quality people driven to produce top quality products.

Experience the Haas Door difference for yourself. We're the choice for dealers with the highest standards in quality, value and service.

Give your customers endless choice in color and style combinations, along with the highest quality products in the industry. For more information about our products please visit [haasdoor.com](http://haasdoor.com).

Open the door to endless possibilities for you and your customers today.



# CAPTAIN KNOW-HOW



LET OUR INNOVATION  
PROTECT YOUR SECTIONAL OVERHEAD  
DOOR INVESTMENT.

**TRACK GUARD**  
STEEL WITH SAFETY YELLOW  
POWDER COAT



**ARROW  
TRU-LINE**

HEROES OF GARAGE DOOR HARDWARE

**LET OUR HEROES  
SAVE THE DAY.**

[WWW.ARROWTRULINE.COM](http://WWW.ARROWTRULINE.COM)

**877-285-7253**

## New commercial door track guards from ATL



Arrow Tru-Line now offers heavy-duty track guards for commercial doors. Building off the success of the company's residential track guards, this new door accessory helps prevent damage to commercial track from industrial equipment such as forklifts. Such protection reduces costly damage that can affect door performance and create downtime.

In stock and ready to ship within 48 hours, these 48"-high, 4mm-thick track guards are clip mounted to the floor. For additional safety, these steel guards feature an angle-contoured top edge and are powder-coated in yellow as a visual alert to nearby workers.

[www.arrowtruline.com](http://www.arrowtruline.com)

◀ **COMMERCIAL TRACK GUARDS:** *The ATL booth included a sample of the company's new heavy-duty track guards.*



## Janus Pantheon operator needs no sideroom

Janus' Pantheon operator, the primary focus at the company's booth, delivers a host of benefits for automatic roll-up door operation. It needs no additional sideroom, is easily installed with no additional bracing or alignment, and its low-voltage DC motor provides soft-start and soft-stop operation.

Janus boasts the "largest offering of commercial roll-up doors in the industry" and a selection of more than 50 colors. The company's short lead-times on all doors allow dealers to reduce their inventory and receive quick delivery.

With four domestic plants and two distribution centers, dealers realize a reduction in freight costs. Plus, its distribution centers provide "immediate" availability of standard models, sizes, and accessories. [www.janusintl.com](http://www.janusintl.com)





# LIFE IS HARD.

## USING YOUR ROLL UP DOOR SHOULDN'T BE.



Janus International is proud to present the Pantheon electric door operator, designed to make the installation and functionality process as easy to use as possible.

From start to finish, the Pantheon motor operator is as easy to use as 1-2-3. With the motor mounted inside the barrel, there's no need for additional side room or extra wiring.

With the built-in logic control feature, you can rest easy knowing that your door won't come crashing down at the wrong time. Pantheon operators also use low voltage DC motors, known for their soft start and stop feature with only a fraction of the noise associated with traditional AC motors.

The settings on the Pantheon motor are easier to adjust than programming a cell phone. Try out this revolutionary addition to roll up doors and experience the Janus advantage firsthand.



**JANUS**<sup>®</sup>  
INTERNATIONAL GROUP

**Pantheon**  
Next Generation Door Automation

866.562.2580 | [marketing@janusintl.com](mailto:marketing@janusintl.com) | [JanusIntl.com](http://JanusIntl.com)

# THERE'S NO CEILING FOR THIS OPENER

With the LiftMaster® 8500 in your lineup, you can relax knowing you have a solution for any garage. With ultra-quiet performance, a secure power lock deadbolt and MyQ® Technology for smartphone control, the only residential wall-mount garage door opener opens new opportunities for your business.



To place an order, visit [Dealer.LiftMaster.com](http://Dealer.LiftMaster.com), call Customer Care at **800.323.2276** or contact your **LiftMaster Sales Representative**.

© 2016 LiftMaster All Rights Reserved

**LiftMaster**

## LiftMaster debuts new mini remote

At Expo, LiftMaster launched its new Mini Universal Remote Control, which has a compact keychain design and is compatible with 90 percent of openers in North America, helping dealers consolidate inventory.

The newest addition to LiftMaster's universal line of accessories, the remote weighs just 1.6 ounces and can attach to a key ring, backpack, or exercise apparel, providing residential customers with convenient and secure access. It features automatic code detection for easy programming and has two independent buttons to operate two different garage door brands or frequencies.

LiftMaster's Expo booth also featured a working display of the 8550W, the industry's first Wi-Fi Garage Door Opener with built-in MyQ technology. The booth also included a demonstration of how MyQ integrates with Nest Cam, allowing users to access a video feed of what's happening in the garage. [www.liftmaster.com](http://www.liftmaster.com)



◀ **MINI MANIA:** LiftMaster's new Mini Universal Remote Control, the smallest product in LiftMaster's giant booth, was the primary focus of all of LiftMaster's displayed products.





## Miller Edge booth wins Best of Show

Miller Edge's booth, which won Best of Show honors at Fencetech, showcased six new UL-compliant products for gate operators.

1. **MGL.** The monitored gate edge transmitter/receiver.
2. **Gate Edges.** A full collection of safety edges with monitored wiring configurations.
3. **MIM.** The Multi-Input Module allows up to six mix-and-match monitored devices.
4. **GEM.** This device converts a resistive edge signal to a pulsed or NC signal per operator brand.
5. **PrimeGuard.** A monitored through-beam photo-eye.
6. **ReflectiGuard.** A monitored retro-reflective photo-eye.

PrimeGuard and ReflectiGuard are compatible with nearly all gate operator brands. This saves dealers from tying up cash in inventory by stocking multiple brands of specific photo-eyes.

Visitors also showed great interest in the MGL monitored gate edge transmitter/receiver. This device wirelessly signals the motor to stop or reverse, and it checks for the presence and function of a monitored gate edge.

[www.milleredge.com](http://www.milleredge.com)

► **READY FOR 2016:** Miller Edge's Fencetech booth, unveiled the day after the Jan. 12 UL 325 changes took effect, showed that Miller Edge was ready with a range of compliant products.



# THE MISSING PIECES TO THE 2016 UL 325 PUZZLE

---



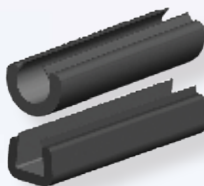
**THE SOLUTION**  
Multi-Input Module



**MONITORED GATE LINK**  
Wireless Gate Transmitter/Receiver



**GATE EDGE MODULE**  
Universal Signal Emulator



**SENSING EDGES**  
Models for All Gate Types



**REFLECTI-GUARD**  
Retro-Reflective Photo Eye



**PRIME-GUARD**  
Thru-Beam Photo Eye



**MONITORED GATE SAFETY**

**WWW.MILLEREDGE.COM ♦ 800-220-3343**





**Leading the garage door industry to  
a higher standard ...  
*It's what we do!***



## The "NEW" National Door Industries!

***The only thing we haven't  
changed is our name!***

### **NEW "STATE-OF-THE-ART" EQUIPMENT**

New injection molding and co-extrusion equipment –  
complete overhaul of current extrusion lines.

### **QUALITY DRIVEN**

Testing and metrology equipment for in-house raw material  
certifications and performance testing.

### **NEW FACES**

From engineering, operations, sales and quality, National is focused  
on bringing the highest quality product to our customers.

***Our commitment to excellence has never been stronger!***

National Door Industries has been a leader in the garage door industry for  
over 45 years. We are striving to provide a new level of customer satisfaction  
that our business partners have come to expect from the industry leader.

**www.natdoor.com • 1-800-628-3667**

6310 Airport Frwy., Fort Worth, Texas 76117



# NATIONAL DOOR INDUSTRIES

EXPO  
2016

## National Door displays window solutions and more

Displaying a wide variety of its extensive product line, National Door's exhibit demonstrated that it is a full-line manufacturer and distributor of engineered products. Its window products dominated the booth with residential garage door window frames, Stylecraft and Styleline insert trim, commercial door windows and frames, Bevelite glass, and more.

Its window solutions also include high-performing injection-molded frames, stick-built custom frames, snap-in insert trim, and patented impact frames for high-wind areas. National Door is now the largest manufacturer of impact frames in the industry.

National Door's products also feature garage door weatherseals including brush and vinyl seals as well as aluminum and vinyl retainers. The company is also a leading supplier of lubricants and cleaners to the garage door industry. [www.natdoor.com](http://www.natdoor.com)



## Northwest Door showcases six doors

The Northwest Door booth featured six doors: two steel doors, two aluminum doors, one wood door, and a hybrid wood/steel door. All of them turned heads, but the Modern Tech insulated steel sandwich door with a brushed nickel finish (see photo) may have gained the most attention.

“This door offers the beauty of aluminum but the strength of steel,” said Jeff Hohman, president. Modern Tech doors are available in three finishes: brushed nickel, dark bronze, and black satin. The door features a 24-gauge steel face, a 2"-thick polystyrene core (R-12), a thermal break, a flexible joint seal, and is available in sizes up to 20'x14'.

Another popular door with visitors was the Infinity Classic carriage style door with an aluminum stile and rail construction in a woodgrain finish. The displayed door had arched windows and featured a dark cherry finish that looked like real wood. The “maintenance-free” door comes in 90 standard designs and is offered in eight wood powder-coat finishes plus standard white.

[www.northwestdoor.com](http://www.northwestdoor.com)



▲ **BRUSHED NICKEL:** This Modern Tech door is actually steel; visitors had to feel it to believe it.



“Thank you for 70 successful years”



*Platinum Anniversary*

*1946 - 2016*

**NORTHWEST DOOR®**

*Continuing Product Innovation & Improvements,  
to Earn Your Business for Another 70 Years*

Together we have been part of many advancements:

- 1989 - Therma Tech™** insulated steel sandwich construction
- 1991** long raised panel design & contemporary flush design
- 2006** Therma Tech II™ R10.4, & carriage panel
- 2009** Therna Max™ R12
- 2011** Tri Tech™ R16
- 2016** bi-directional woodgrain
- 1999 - Heritage Classic™** insulated wood carriage style
- 2008** Builder Collection™ wood builder grade
- 2002 - Township Collection™** stile & rail wood carriage style
- 2004 - Infinity Classic™** aluminum carriage style, custom arches
- 2011** woodgrain powder coat
- 2012** VG panels, T&G face
- 2006 - Therma Classic™** insulated steel overlay carriage style
- 2008 - Modern Classic™** aluminum full vision
- 2011** woodgrain powder coat
- 2014 - Therma Elite™** insulated composite/steel carriage style
- 2016 - Modern Tech™** smooth insulated steel, anodized appearance

“We appreciate your business”



**Linear**  
PRO ACCESS™

1-800-543-4283  
linearproaccess.com

**Armstrong job**

3456 Spruce Avenue  
two 9'x7' insulated raised  
panel doors

✓ 2 LDC0800 operators  
with battery back-up

✓ 2-7' belt rails

✓ 8' punched angle

✓ 1 MDTK keypad

✓ 3 MCF-3 transmitters



Linear PRO Access is the professional brand of GTO Access Systems, LLC

# LINEAR PRO ACCESS

EXPO  
2016

*The Professional Brand of GTO Access Systems*

## Linear adds smart-phone control

At the GTO Access Systems booth, the most popular product was the new Linear Pro Access LCD0850 residential garage door opener. It comes with Wi-Fi connectability that enables the user to monitor and operate the opener remotely from a smart phone. The new LCD0850 also features energy-efficient adjustable LED lighting and a new smart control wall station.

When using the BBU battery backup unit, the opener can still be operated even when the power is out and the internet is down. The opener is expected to be available in late 2016.

### Improved gate operator

In addition, a newly re-engineered gate operator will be introduced in the summer. The new unit features an improved full open limit switch and “Dual Sense Technology,” which allows it to meet 2016 UL 325 requirements without the need for additional external entrapment protection devices.

[www.linearproaccess.com](http://www.linearproaccess.com)



## Upwardor launches upgraded pneumatic operator

“No other air operator can do what PowAirDor can do,” said Tony Anderson of Upwardor.

The Upwardor booth launched an upgraded PowAirDor pneumatic operator with many improvements over the old system. The new PowAirDor features a new LED display for easier programming and monitoring, an adjustable height stop, a mid-stop function, and a timed open/close feature.

The pneumatic operator opens faster than typical trolley operators and features patented speed control allowing it to operate at varying desired speeds. It was created for ultra high-cycle and high corrosion applications and is adaptable to any door. With only one moving part, the operator is virtually maintenance free. [www.upwardor.com](http://www.upwardor.com)

◀ **UPGRADED:**  
Upwardor's new  
PowAirDor pneumatic  
operator features many  
improvements.







# CURB APPEAL WITH ATTITUDE

Upwardor now offers more options for great-looking residential doors with the performance you have come to expect from our commercial products.

Our new Kanata Collection™ offers a wide selection of panel designs with an improved profile for a better fit. Our new premium Craft Series™ features a taller panel for a truly distinct look and our pinch-resistant Stylistic Collection™, with updated emboss pattern, is now available in five designs.



Contact us today for more information and arrange to receive new door samples for your showroom, call **1-800-667-3367** or visit **[upwardor.com](http://upwardor.com)**

© 2016, ™ Trademark of Upwardor Inc.



**upwardor™**

# THE NEW STANDARD

## Airlift Doors Introduces Heat Sealed Polycarbonate

### Why Heat Seal?

By using specialty equipment to heat seal the ends of the polycarbonate door sections, moisture build up in the panels is reduced as it creates a weather tight seal on the polycarbonate itself.

### What is anodizing?

Anodizing changes the microscopic texture of the surface and changes the crystal structure of the metal near the surface. Anodizing the aluminum surfaces will make them harder and less likely to show wear or corrosion. Airlift Doors has now included clear anodizing on all Alaska door packages.

Why do we do this?

- Increases resistance to corrosion and wear
- Protects the aluminum and keeps it looking new
- Colored anodizing adds detail to doors



## Thermal Heat Seals the Deal

There is no question that the moisture that gets trapped inside your polycarbonate doors can be an eye sore. It's a problem that every car wash owner faces, yet to this point many door manufacturers have disregarded this issue. While moisture in the panels won't affect your door's performance, this process drastically improves appearance by reducing or eliminating moisture from getting inside. Why settle for doors that are not top quality? Airlift Doors doesn't believe you should have to...

### *Improving quality...*

The Alaska polycarbonate door is one of the best selling overhead doors in the industry. Why? Because, it has proven its value over the test of time. So why improve it? Airlift Doors has found a way to reduce the moisture build up in the polycarbonate panels by using a new procedure to seal the edges making it weather tight.

Since this technical improvement makes such a noticeable difference to the look and longevity of the door, Airlift has made it a standard feature on all polycarbonate door packages.



AIRLIFT DOORS, INC.

1-888-368-4403

[www.AirliftDoors.com](http://www.AirliftDoors.com)

## Airlift improves polycarbonate panels

The Airlift Doors booth featured two new improvements to its Alaska polycarbonate doors: heat-sealed panels and clear anodized aluminum. Both features are now standard, and they improve the doors' appearance and performance in high moisture environments such as car washes.

"Thermal heat sealing the polycarbonate panels drastically improves the door's appearance by reducing or eliminating moisture from getting inside," said Jim Johnson, Airlift's general manager. "It creates a weather-tight seal on the polycarbonate itself."

The new anodized aluminum surfaces provide the benefits of better protection to keep the aluminum looking new, along with increased resistance to corrosion and wear. Colored anodizing is also available as an aesthetic option. [www.airliftdoors.com](http://www.airliftdoors.com)



▲ **TWO IMPROVEMENTS:** The primary door in Airlift's booth had two different kinds of panels featuring the two new improvements: heat-sealed polycarbonate and anodized aluminum.

## Clopay's new Modern Steel Collection takes center stage

In response to the growing demand for contemporary design among homeowners and architects, Clopay launched its new Modern Steel Collection garage doors at Expo. The series of doors feature clean lines, large expanses of glass, steel sections, and custom colors.

The doors feature three-layer insulated construction with optional Intellicore polyurethane foam insulation that provides an 18.4 R-value. Clopay's WindCode Storm-Ready reinforcement and impact-rated glass are also available for coastal regions and code requirements.

The collection is offered in complementary garage door and entry door designs. Pat Lohse, Clopay vice president of retail sales, said the new product line "gives dealers an opportunity to upsell and increase profits by presenting a more comprehensive solution to exterior home improvement."

[www.clopaydoor.com](http://www.clopaydoor.com)

▼ **MODERN AND STEEL:** Clopay's Modern Steel Collection builds on the popularity of aluminum and glass garage doors by using cost-effective and durable steel sections.





# collaborate

on every level.



**Spokane International Airport  
Snow Removal Facility:**  
*Custom Installation*

Discover the potential of your commercial business when you can offer hundreds of distinctive sectional doors with unique features to meet your customers' vision. Join the Clopay® team and get the support of a responsive team to help you deliver powerful solutions.

**Made in the U.S.A.** © 2016 Clopay  
Building Products Company, Inc.,  
a Griffon company.

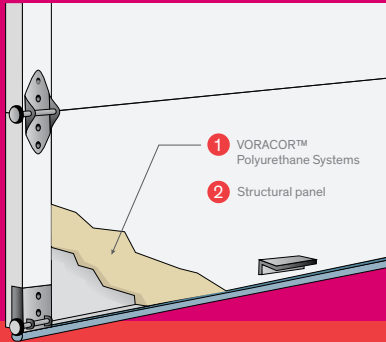
To become an authorized Clopay  
commercial dealer, call **800.526.4301**  
or visit **[clopaycommercial.com](http://clopaycommercial.com)**.

 **Clopay®**



## Why Insulated Doors?

- **Better climate control**, even in unconditioned garages
- **Reduces conditioned air loss** from the rest of the house
- **Quieter operation**
- **Increased durability** and **toughness**



## Why Dow?

- Custom polyurethane solutions for your process to **increase R-value**, **reduce density** and **reduce cycle time**
- Unique DELTA THERM™ Eliminator Dispensing Gun goes from **0 to foaming in 2 hours**, keeping your investment low
- Only supplier with comprehensive **polyurethane**, **polystyrene**, and **adhesive solutions**
- **State-of-the-art continuous pilot line** for research & development collaboration with partner customers

Learn more at [www.dowpolyurethanes.com](http://www.dowpolyurethanes.com) or call **800-441-4369**.

## Dow showcases its polyurethane systems and dispensing gun

Dow's Voracor polyurethane systems help manufacturers produce high performance polyurethane insulated doors. Using the system, door manufacturers can optimize thermal insulation, density, and cycle time to meet specifications. Plus, the Voracor system offers great adhesion through both pour-in-place and spray manufacturing processes.

Dow's portfolio of blowing agent options include those with EPA-compliant low global warming potential. Dow, the only provider with a state-of-the-art continuous line devoted to testing and prototyping, offers systems optimized for both continuous and discontinuous processes.

### Delta Therm Eliminator Dispensing Gun

Dow's booth also displayed its new Delta Therm Eliminator Dispensing Gun for pour-in-place processes. It offers key benefits to manufacturers, such as easy operation, easily adjusted flow controllers, internally heated hoses, monitoring of VOC data for reporting purposes, customizable solutions, and a low-cost lease agreement that includes training and assistance.

[www.dowbuildingsolutions.com](http://www.dowbuildingsolutions.com)



▲ **LOW-COST DISPENSING GUN:** Dow is offering its Delta Therm Dispensing Gun to manufacturers on a low-cost lease basis.



**We don't just manufacture springs, we sell everything to get your job finished. We're your one stop shop.**

In 2016 we've added new brands to give you the selection you need. See all we have to offer today!

800.752.8522  
SERVICESPRING.COM

**SERVICE SPRING CORP**  
Unequaled service through innovation





## Service Spring app goes viral

Service Spring recently launched a new, free engineering app called Solutions Connect. The app allows door installers to determine the springs needed for any job without leaving the job site.

Solutions Connect provides door engineering for springs, conversions, door weight, and IPPT on residential, commercial, and rolling steel door applications. With the app, dealers can also request an immediate quote for a spring that was just engineered. The app is available for download from the app stores at Apple, Google, and Amazon.

At Expo, Service Spring also featured its new Quiet Hinge that almost eliminates the noise of garage door hardware. The hinge offers added strength and self-lubrication to reduce noise.

[www.sscorp.com](http://www.sscorp.com)



▲ **12,000 DOWNLOADS:** Solutions Connect, Service Spring's popular and free spring engineering app, has already been downloaded 12,000 times.

## EMX launches retroreflective photo-eye

At Fencetech, EMX Industries featured its new IRB-RET retroreflective photo-eye. The sensor offers long-range 60' performance, high immunity to fog and sunlight, and is compliant with the new 2016 UL 325 regulations. Thanks to its universal design, the IRB-RET is compatible with all operators on the market. It is equipped with five interfaces for monitored operation and is compatible with non-monitored, legacy products.

### Thru-beam, too

EMX also showed its IRB-MON thru-beam photo-eye with 115' long-range performance that offers high immunity to fog and sunlight. Like the IRB-RET, the IRB-MON meets the 2016 UL 325 requirements and is compatible with all operators on the market as well as non-monitored, legacy products.

### CarSense 303

The CarSense 303 magneto-resistive vehicle detector improves detection sensitivity with 3-axis selectable detection and EMX's exclusive Detect-on-Stop technology to ignore unwanted traffic. Its Ultrameter digital display provides fast and reliable sensitivity adjustments, and its compact design saves installation time and money. [www.emxinc.com](http://www.emxinc.com)





## The Leaders in Detection Technology

### MAGNETORESISTIVE

Loopless Vehicle Detector  
CS303



### INFRARED

UL325-2016 Retroreflective Photoeye  
IRB-RET



### INDUCTIVE

Plug-In Vehicle Detector  
ULT-PLG



The EMX name says it all ...

**E**ngineered to **M**anage your **X**-factor.

Providing cost-effective solutions to unique access control applications.

To learn more visit  
[www.emxinc.com](http://www.emxinc.com) or email [salesupport@emxinc.com](mailto:salesupport@emxinc.com)

4564 Johnston Parkway • Cleveland, OH 44128 • 800-426-9912





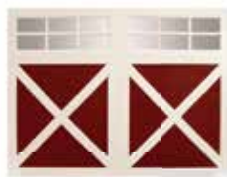
Thank You  
for Visiting Our Booth at the  
2016 IDAExpo!



Family Safe  
Contemporary



Briarcrest



RockCreeke™



RapidCoil™

**Two Great Brands, One Great Company.**  
Your Partner for Door Solutions

For more information on Raynor Worldwide products, visit us at:



**Richards-Wilcox**  
Premium Garage Doors

[www.rwdoors.com](http://www.rwdoors.com)



[www.raynor.com](http://www.raynor.com)



## Raynor displays distinctive products



Of all the doors displayed at the big Raynor booth, the top three attention-getters may have been its RapidCoil high-speed door, the AlumaView AV300 3"-thick sectional door, and the Richards-Wilcox Briarcrest residential sectional door.

RapidCoil fabric doors, which can open as fast as 8' per second, help Raynor to be a full-line supplier. The attractive and sturdy 3"-thick AlumaView features an integrated strut into the rail of the sections for a cleaner look. The Richards-Wilcox Briarcrest is a recessed ranch panel door with inlays to provide a carriage house look at an affordable price.

This year is the second time in recent years that Raynor and Richards-Wilcox doors have exhibited in the same booth. This shows Raynor dealers the wider variety of residential and commercial doors that are available to them. [www.raynor.com](http://www.raynor.com) and [www.rwdoors.com](http://www.rwdoors.com)

▲ **FAST FABRIC:** The Raynor RapidCoil high-speed door commanded attention as the cornerstone of the Raynor/Richards-Wilcox booth.

## Sommer unveils two new openers

The new Sommer evo+ and pro+ garage door openers represent “the next stage in the evolution of openers.” Both models feature Sommer’s plug and play accessory system. Optional features such as battery pack, additional LED lighting, expanded memory, and more can be added simply by plugging the accessory into a color-coded socket on the circuit board. This simplifies inventory for dealers.

Both models include a new revolutionary Direct Drive Technology (traveling motor on a fixed chain) and the new SOMloq2 bi-directional radio system. SOMloq2 sends the command from the transmitter to the receiver and sends a signal back to the transmitter, thus providing increased safety and convenience. The system includes encryption that provides one of the highest levels of security.

The Sommer pro+ opener has a detachable control unit that can be mounted on the wall or ceiling. The Sommer evo+ opener’s control unit is mounted at the end of the rail as in traditional opener designs.

[www.sommer-usa.com](http://www.sommer-usa.com)



◀ **SOMMER PRO+:**  
*Mark Myers demonstrates  
the new Sommer pro+  
opener with a detachable  
control unit that can be mounted  
on the wall or ceiling.*

## evo<sup>+</sup>

# The next garage door opener evolution

Faster. Stronger. Brighter. More Secure.



## PLUG & PLAY ACCESSORIES

Create your own optional value-added product



Battery pack



Alarm/warning buzzer



Motor Lock



Additional LED lighting



Parking laser



Memo - expand  
memory to 450 remotes

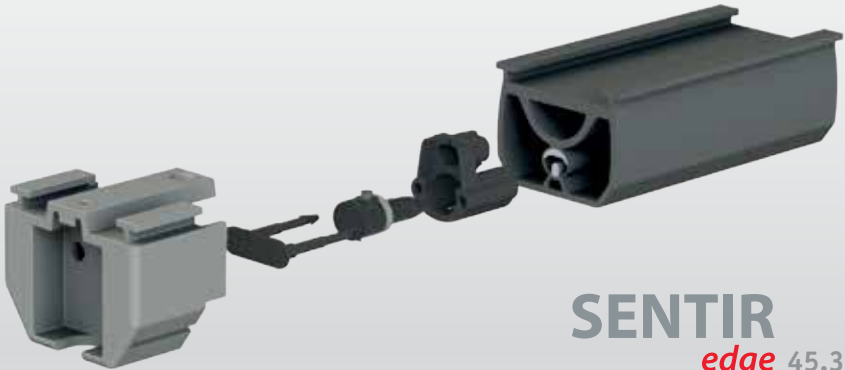


Senso - control humidity  
and temperature



Motion sensor

# UL compliant safety at its best!



**SENTIR**  
*edge* 45.30

- THE ALL NEW SENTIR edge 45.30!
- Simple plug-in and lock system
- Quick on-site assembly
- Reliable and weather-resistant
- The easiest safety device for doors available

**ASO Safety Solutions**

300, Roundhill Drive Unit 6  
USA-Rockaway, NJ 07866

[sales-us@asosafety.com](mailto:sales-us@asosafety.com) [www.asosafetyus.com](http://www.asosafetyus.com)





## ASO's safety edge is "easiest to work with"

ASO Safety's booth emphasized the message that its Sentir edge is "the easiest safety edge to work with." This durable UL-compliant edge is the latest evolution of the company's line of safety contact edges.

It features an easy plug in and lock system for quick and reliable on-site assembly and installation. It comes in six different sizes to meet the demands of all markets. The Sentir edge is also available in a kit for easy installer handling.

Founded in 1984, ASO Safety Solutions is a global supplier of security and sensor systems.

[www.asosafety.com](http://www.asosafety.com)



### ▲ THE EASY EDGE:

*Surrounded by the booth's dominant messaging, Olaf Grobe describes Sentir's benefits to booth visitors.*



## New marketing campaign dominates ATL booth

Surrounded with eye-catching images of Arrow Tru-Line's four superheroes, the colorful booth also touted the company's industry-leading lead times and its nationwide reach. ATL

products are now available in one to eight days. This helps ATL customers reduce their inventory and increase their cash flow with a lower total landed cost (freight and cash flow).

The four superheroes are Perfector, Lady Liaison, Captain Know-How, and Pronto-Man. Perfector represents exacting quality. Lady Liaison depicts the company's expert customer service team. Captain Know-How promotes the company's engineering expertise, and Pronto-Man represents fast delivery.

[www.arrowtruline.com](http://www.arrowtruline.com)



▲ **SUPERHERO PERFORMANCE:** ATL new marketing campaign features four superheroes that represent the company's four primary competitive advantages.

# THE ASTONISHING PRONTO-MAN

THE SHORTEST LEAD TIMES  
IN THE GARAGE HARDWARE INDUSTRY  
COMBINED WITH A NATIONWIDE FOOTPRINT!!



## ARROW TRU-LINE

HEROES OF GARAGE DOOR HARDWARE

LET OUR HEROES SAVE THE DAY.

[WWW.ARROWTRULINE.COM](http://WWW.ARROWTRULINE.COM) 877-285-7253

# Faster Install.

The **Amarr Rapid Install Vertical Lift** track system requires fewer wall attachments saving approximately 20 minutes installation time. Designed for commercial warehouse and dock doors in small and large commercial projects. Available on Amarr 2742 & 2741 (polyurethane insulated) and all ribbed panel steel doors.



Fewer Wall Attachments



One-piece Vertical Track



Visit **amarr.com** or call **1.800.503.3667** for more information and to locate the nearest Amarr Door Center.



More Amarr Commercial Products





## Entrematic enhances Amarr aluminum doors

With the growing importance of sustainability in residential and commercial buildings, the demand for aluminum full-view doors continues to grow. In response, Entrematic recently introduced new anodized finishes and custom powder-coat or Kynar finishes in Amarr residential Vista aluminum full-view doors and the commercial aluminum full-view Amarr 3552. By increasing natural light transmission, the doors reduce the amount of energy needed to light a room.



### More woodgrain finishes, too

In addition to aluminum finishes, Entrematic now offers woodgrain finishes in its Amarr traditional and carriage house designs at every price point. Woodgrain finishes on steel doors provide the look of natural wood and the low-maintenance benefits of steel.

### Bigger and wider

Also new is the availability of a 40'2"-wide Amarr 2742 heavy-duty energy-efficient polyurethane sectional door for agricultural applications. The 2742 offers R-19 insulation for better thermal performance. [www.amarr.com](http://www.amarr.com)

▲ **RACE TO THE FINISH:** Amarr aluminum residential and commercial garage doors now feature new finishes. Pictured: Amarr Commercial 3582.

## DBCI shows off wind-certified commercial door

DBCI's 3000 Series roll-up door is certified for moderate-to-high wind loads common to many coastal regions and other parts of the U.S. The door features an 80-degree wind-lock profile that makes installation easier and faster. These commercial-grade roll-up doors are designed to meet or exceed operational requirements for commercial doors with little or no maintenance.

▼ **WIND CERTIFIED:** The 3000 Series are wind certified and require little or no maintenance.



### Curl-Lok continues to impress

DBCI's Curl-Lok roll-up door continued to attract attention. Curl-Lok's patented locking system allows for easy and quick replacement of a single panel instead of an entire door, resulting in a more cost-efficient door solution. Replacement panels can also be stored on-site so that doors can be back in operation in a matter of minutes, further reducing downtime.

### Dock door solutions

Another featured product at Expo was the DBCI 2500 series heavy-duty steel curtain door. Its deep engagement guides create greater durability and stronger, longer-lasting performance with little or no maintenance. [www.dbci.com](http://www.dbci.com)

Integrity. Partnership. Quality.

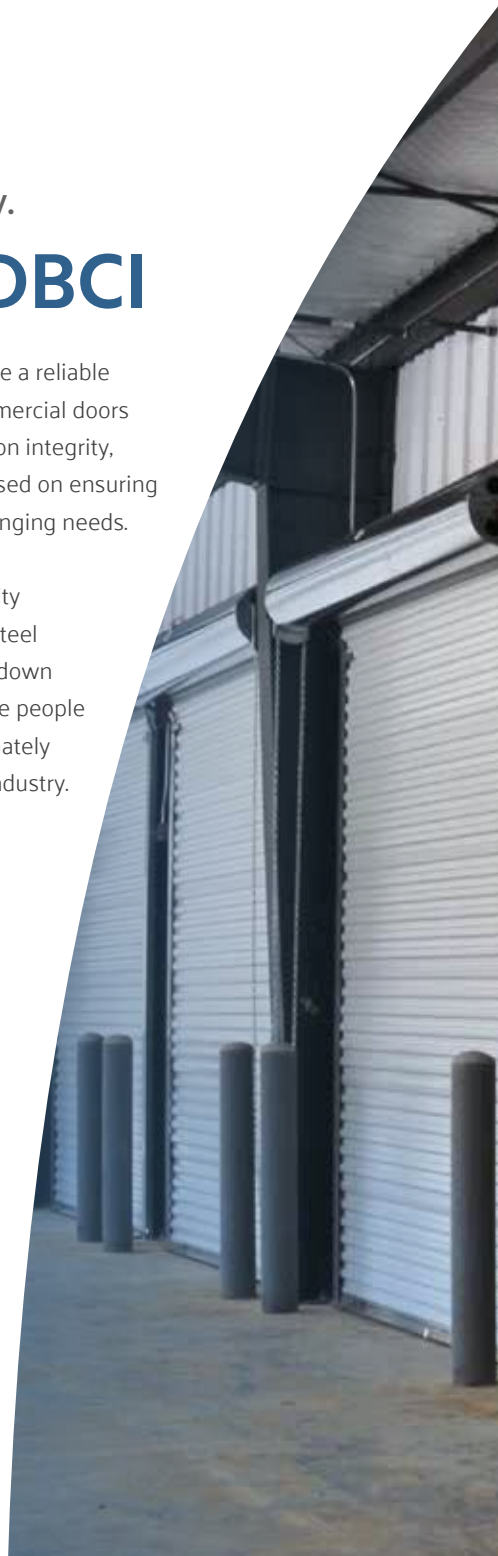
# DEPEND ON DBCI

At DBCI, we believe it is our responsibility to be a reliable partner to our customers. That's why our commercial doors are designed and manufactured with a focus on integrity, quality and longevity, and our people are focused on ensuring our products and services meet your ever-changing needs.

Each door is assembled with the highest quality materials– from the deep-ribbed, corrugated steel curtain to the single- piece saddle clamp and down to the aircraft-grade aluminum bottom bar. The people and components behind your DBCI door ultimately make it the most durable and reliable in the industry.



800.542.0501 | [www.dbci.com](http://www.dbci.com)





# People Always Find a Way to Get Into Trouble

**At DKS, we take safety a step further and plan for the unexpected.**

In addition to meeting the new UL 325 monitored entrapment protection requirements with electronic circuits, many DKS gate operators are designed with a mechanical clutch system that relieves pressure on the gate. It's really quite simple - less pressure equals less damage should an unfortunate situation arise. Don't let Murphy's Law ruin your day - plan for the unexpected.

We build functional gate operators for humans - and we keep them safe at the same time.



for more information

**[doorking.com/UL325](http://doorking.com/UL325)**

800-673-3299 [info@doorking.com](mailto:info@doorking.com)

**Parking Control**

**Access Control**

**Telephone Entry**

**Gate Operators**

Member: AFA, DASMA, NAA, IDA, NOMMA, NPA, SIA, SSA, CANASA



## DoorKing emphasizes its cellular telephone entry systems

In one of the largest exhibits at Fencetech, DoorKing promoted its new cellular telephone entry systems that provide both voice and PC programming over a 4G LTE cellular network. "It's the only system that truly duplicates a commercial entry system on a POTS (Plain Old Telephone Service) line via a cellular connection," said Rick Sedivy, director of marketing.

It also simplifies installation by having no trenches to dig, no phone line or network wiring to run, and no need to order a phone line from the phone company. The cellular adapter can also be used on existing telephone entry systems when the POTS line attached to it becomes broken or unserviceable.



### Lighted break-away arms

In addition to showing DoorKing's line of gate operators that meet the new 2016 UL 325 requirements, the booth also featured new LED Lighted Break-A-Way arms. Designed for barrier gate operators with loop detector/photo-eye interface, the innovative arms help to protect pedestrians who may wander under a barrier arm. [www.doorking.com](http://www.doorking.com)

▲ **CELLULAR SYSTEM:**  
*DoorKing's Andrew Thompson explains the benefits of cellular telephone entry systems.*

## Upwardor unveils two new door models

At Expo, Upwardor launched two new door models. One is the Kanata Collection, a new residential profile available in a long stamp pattern and a long carriage pattern. The other model is the Craft Series, a three-section residential door that includes three stamps of 28" and 32" panels.

The new residential lines are made with institutional quality construction methods and are polyurethane foam-injected for a high R-value.

"These models really round out our product offering to enable us to better serve our customers," added Tony Anderson, co-owner. "We are a new ownership company that has made many changes, and we're growing fast. Stay tuned for much more to come." [www.upwardor.com](http://www.upwardor.com)

► **EXPANDING THE PRODUCT LINE:** Upwardor's new Craft Series (pictured) and the Kanata Collection add more selections to Upwardor's residential product line.





# UPPING THE ANTE

Our new and improved POWAIRDOR™ pneumatic operator has been enhanced to provide you with the most reliable performance possible.

POWAIRDOR now features a number of new upgrades to meet the high expectations of commercial environments including a new LCD display for easier programming and monitoring of the system, new functional stop and door height setting capabilities along with many more upgradable modules and features.

Plus a portion of the proceeds from the sale of every POWAIRDOR operator will be donated to Upwardor's Opening Doors for Veteran's Program in support of the True Patriot Love Foundation.

**POWAIRDOR™**  
Reliable Performance

Contact us for more information and to arrange a preview of the all new POWAIRDOR today, call **1-800-667-3367** or visit **upwardor.com**

© 2016, ™ Trademark of Upwardor Inc.



upwardor™

# Sell More Than Good, Better, Best...

## Synergy 200 Collection

Synergy 260



Good  
1/2 HPcs

Synergy 270



Better  
3/4 HPcs +

Synergy 280



Great  
1 HPcs +

## Synergy 300 Collection

Synergy 360



Super  
1/2 HPcs

Synergy 370



Outstanding  
3/4 HPcs +

Synergy 380



Ultimate  
1 HPcs +

Synergy by Marantec now offers two distinct collections of garage door openers. The 200 Collection offers basic functionality and can handle anything from single car garage doors to heavy carriage house doors.

The 300 Collection offers additional features such as battery back-up compatibility as well as unattended operation functionality.

Call us today for  
introductory specials

**Marantec**   
Antriebstechnik

[www.marantec.com](http://www.marantec.com)

**Marantec America Corporation**

5705 Centerpoint Court • Gurnee, IL 60031

888.622.2489 • 847.596.6400 • Fax 847.478.0348



## Marantec previews Synergy LC

At Expo, Marantec unveiled the Synergy LC light-duty commercial trolley operator for commercial doors up to 14' high. Featuring a 1,000-Newton motor, its push and pull force is comparable to one horsepower. It includes an open-stop-close wall station, timer-to-close functionality, and LED lighting. Optional radio and photo-eye kits are also available.

Synergy LC is compatible with Marantec's heavy-duty belt rail system. To reduce freight costs and storage limitations, all 10', 12', and 14' applications include a pre-tensioned 2-piece rail system that assembles in seconds. Synergy LC will be available this summer.



### Synergy Solo

Marantec also unveiled its Synergy Solo residential operator, positioned as a contractor model for doors up to 8' high. It is rated at 1/2 HPcs (comparable strength) and is compatible with Marantec's belt and chain drive systems. Synergy Solo is available for immediate distribution.

[www.marantec.com](http://www.marantec.com)

▲ **COMING SOON:** Marantec will soon launch its Synergy LC, a light-duty commercial trolley operator.

## Miller Edge launches six new safety devices

At Expo, Miller Edge introduced a collection of six new products to comply with the 2016 UL 325 safety standard for motorized gates. The key to its 2016 gate products is compatibility with nearly all brands of gate operators. This saves distributors from having to stock multiple brands of safety products.

“We believe safety accessories should be universally acceptable and readily available to all,” said Flossie Mohler, vice president of sales & marketing.

### MIM leads the pack

Of all the new products (see Miller Edge’s Fencetech coverage on page 10), Mohler thought its Multi-Input Module (MIM) had greatest appeal at Expo. MIM expands the operator’s ability to accept up to six monitored safety devices. The installer can mix and match devices, allowing greater flexibility in designing the safest gate system possible for each installation. [www.milleredge.com](http://www.milleredge.com)



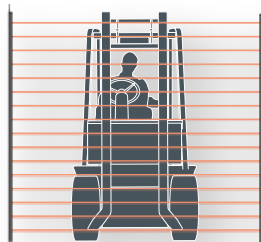
▲ **BUSY BOOTH:** Miller Edge’s open booth design, featuring six new UL 325-compliant products, attracted a steady stream of visitors.

INNOVATION

# MONITORED PHOTO OPTICS



**REBEL**  
Thru-Beam Photo Eye



**MONITORED LIGHT CURTAIN**  
A Blanket of Protection



**REFLECTI-GUARD**  
Retro-Reflective Photo Eye



**PRIME-GUARD**  
Thru-Beam Photo Eye



**UNIVERSAL SAFEGUARDING SOLUTIONS**  
**WWW.MILLEREDGE.COM ♦ 800-220-3343**



**MAKING YOUR HOUSE A HOME**



**We all know that first impressions are important.**

That's a responsibility that Wayne Dalton takes seriously. Our dedication to innovative design, quality construction and rock-solid customer service ensure your home makes the perfect first impression.

With more design options than ever before, Wayne Dalton can make a garage door that's uniquely yours.

**Learn more about our full line of residential door solutions:**

**[www.WAYNE-DALTON.com](http://www.WAYNE-DALTON.com)**





## Wayne Dalton launches high-speed door line

Wayne Dalton chose Expo to release its new ADV-X high-speed rolling doors, available in models 881-885. All models are fast-acting, high-cycle high performance doors with a springless design that minimizes interruption for maintenance.

Model 881 has been independently-tested for airtightness and offers a patent-pending curtain-lock to make the door field-repairable. Model 884 features a patent-pending articulating roller windlock that allows the door to operate under heavy wind conditions.

In addition, the company also unveiled its Model 9510 Designer Steel door with a Vicksburg panel. The new design features three sections in a 7' tall door and a full-section embossment design.

[www.wayne-dalton.com](http://www.wayne-dalton.com)



◀ **HIGH SPEED AND SPRINGLESS:** Wayne Dalton launched its new high-speed doors that feature a springless design for easy maintenance.

**Wayne Dalton™**  
GARAGE DOORS

▲ **NEW LOGO!** Wayne Dalton also revealed new logos for its residential and commercial products.

## Skylink features its latest opener

Skylink's newest opener, Atoms, features built-in LED lighting, backup battery compatibility, and smart phone operability, all in an affordable, compact, yet powerful opener. The Atoms series is available in 1/2, 3/4, 1, and 1-1/4 horsepower-equivalent motors (600, 800, 1000, and 1200 Newtons).

In addition to the Atoms opener, Skylink also displayed its MK II and MK III openers. The MK II has a CFL bulb in front, while the MK III has LED lighting in the front and rear. Both offer backup battery compatibility and smart phone operability, with an optional passcode-protected remote for protection against thieves.

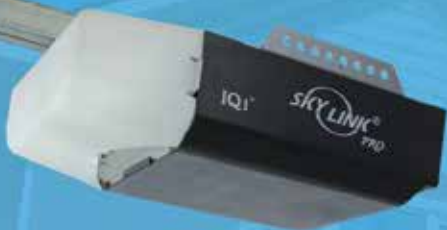
The SkylinkNet Connected System offers a complete smart home solution that allows connection between a smart phone and the garage door, home automation, and home alarm system. [www.skylinkhome.com](http://www.skylinkhome.com)

◀ **NEW ADDITION:**  
*Skylink's booth featured the Atoms opener, the latest addition to the Skylink lineup.*



A full line of new  
**SKYLINK GARAGE DOOR OPENERS**

**QUIET    COMPACT    POWERFUL    DURABLE**



**EQ/IQ-Series**



**Mark II**  
CFL-Light



**Mark III**  
LED-Light



**ATOMS**



**GROW YOUR BUSINESS WITH SKYLINK GARAGE DOOR OPENERS**

Contact your Skylink Sales Representative at

**+1-800-304-1187** For more information visit [SKYLINKHOME.COM](http://SKYLINKHOME.COM)  
or send a request to [sales@skylinkhome.com](mailto:sales@skylinkhome.com)

What's beneath the tip makes all the difference.

At Torque Force, we help you stay focused on  
**YOUR BUSINESS.**



Sourcing &  
Procurement



Quality Controls  
Throughout the  
Supply Chain



Transport &  
Logistics



Inventory  
Management



Worldwide  
Warehouse Network

**TORQUE**  
**FORCE**  
OEM-DEDICATED COMPONENT SUPPLIER

[www.canimex.com](http://www.canimex.com)

